



# 2961 ALLIS-CHALMERS MOTOR TRUCKS

## 1962 SCHEDULE FOR BYU, OPPONENTS

	Sept. 15	Sept. 22	Sept. 29	Oct. 6	Oct. 13	Oct. 20	Oct. 27	Nov. 3	Nov. 10	Nov. 17	Nov. 24
UNIVERSITY OF PACIFIC	EMERSONS at Stockton	New Mexico State at Las Cruces	Santa Clara at Stockton	San Diego Marines at Stockton	Los Angeles State at Los Angeles	Oregon State at Corvallis	Washington State at Stockton	San Jose State at Stockton	San Diego State at San Diego	Fresno State at Fresno	
ARIZONA	V.M.I. at Lynchburg	Virginia Tech at Roanoke	Scottsdale at Albuquerque	Furnham (5) at D. C.	Boston Univ. at D. C.	W. Virginia at Martinsburg	Army at D. C.	Richmond at D. C.	William & Mary at Williamsburg	Syracuse at Syracuse	
COLORADO STATE		Air Force at Air Force	Arizona State at Tempe	U.C.L.A. at (12) Los Angeles	Utah State at Logan	Wyoming at Wyoming	Idaho at Ft. Collins	Utah at Ft. Collins	New Mexico State at Albuquerque	Oregon State at Corvallis	Montana at (22) Ft. Collins
UTAH											
MONTANA	Wyoming at Billings	N. Dakota at Grand Forks	Utah State at Logan	Idaho at Missoula	Webster at Missoula	Idaho State at Pocatello			Montana State at Missoula	New Mexico State at Albuquerque	U.C.L.A. at (Dec. 1) at Salt Lake City
UTAH STATE	San Jose State at San Jose	Idaho at Boise	Montana at Logan	Montana State at Bozeman	New Mexico State at Albuquerque	Idaho State at Pocatello			Arizona State at Tempe	Utah State at Salt Lake City	
NEW MEXICO	New Mexico State at Albuquerque	Wyoming at Laramie	Arizona at Logan	Texas West. at El Paso	Utah State at Salt Lake City	San Jose State at San Jose			Utah State at Logan	Montana at Salt Lake City	
WESTERN MICHIGAN	Central Mich. at Mt. Pleasant	Louisville at Kalamazoo	Albuquerque at Miami	El Paso at Albuquerque	Utah State at Toledo	San Jose State at San Jose			Utah State at Logan	Utah State at Salt Lake City	
WYOMING	Montana at Billings	New Mexico State at Laramie	Washington State at Laramie	Utah at Laramie	Texas West. at El Paso	Arizona State at Laramie	Colorado State at Ft. Collins	Air Force at Air Force	Utah State at Logan	Utah State at Logan	

## PRESS NOTES

**PRESS PASSES** — Requests for working passes should be made directly to the Sports Information Director a week prior to the game. Women are not allowed in the press box, and the area is reserved for those actually covering the game. Drivers, and others who may accompany those covering the game will be asked to sit elsewhere. Comp seats will be made available, if the requests are made in advance.

**PRESS BOX** — The BYU press box, located at the top of the east stands, is just inside the main entrance to the stadium. A parking area just north of the main gates is reserved for working press, and passes will be supplied by request. The press will be admitted on identification.

**BROADCASTING BOOTHS** — Four radio booths are available, including one reserved for the visiting station which is designated the official station by the visiting team.

**SERVICES** — Complete game statistics—lineups, play-by-play, scoring and yardage reports—will be supplied at the end of the game.

**UNIFORMS** — The Cougars will wear royal blue uniforms at home and white uniforms on the road.



Member  
of  
Western  
Athletic  
Conference

---

## CONTENTS

1962 Schedule, 1961 Results .....	2-3
New Conference .....	4-5
On the Road .....	6
Administration, Coaching Staff .....	7-11
Outlook .....	12-15
1962 Roster .....	16-17
Opponents .....	18-22
Records .....	24-31
Basketball Schedule .....	33
News Outlets .....	32

---

# 1962 SCHEDULE

Date	Oponent	Site	Time
Sept. 15	Univ. of Pacific	Stockton	8:00
Sept. 22	*Arizona	Tucson	8:00
Sept. 29	Geo. Wash. Univ.	Provo	8:00
Oct. 6	Colorado State	Fort Collins	8:00
Oct. 13	*Utah	Salt Lake City	1:30
Oct. 20	Montana	Missoula	1:30
Oct. 27	Utah State	Logan	1:30
Nov. 3	*New Mexico†	Provo	1:30
Nov. 10	West. Michigan	Kalamazoo	1:30
Nov. 17	*Wyoming	Provo	1:30

\*Conference Games (Western Athletic Conference)

†Homecoming

## FROSH SCHEDULE

Oct. 26	Utah at Provo
Nov. 2	Utah State at Logan
Nov. 9	Air Force Academy at Provo
Nov. 16	Utah at Salt Lake City

# FACTS ABOUT BYU

**LOCATION:** Provo, Utah (Population 35,000)

**FOUNDED:** October 16, 1875, by Church of Jesus Christ of Latter-day Saints (Mormon)

**PRESIDENT:** Dr. Ernest L. Wilkinson, University is governed by Board of Trustees.

**ENROLLMENT:** Approximately 11,200 (Fall 1961)

**CONFERENCE:** Western Athletic Conference (Rocky Mountain-Southwest), Paul Brechler, Commissioner, Office in Suite 230, Hilton Hotel, 1515 Cleveland Place, Denver 2, Colorado

**COLORS:** Royal Blue and White

**NICKNAME:** Cougars

**CAMPUS EXCHANGE:** Provo Number: FRanklin 4-1211; Edwin R. Kimball, Director of Athletics, Ext. 2786 (Fieldhouse); Hal Mitchell, Head Football Coach Ext. 2918 (Fieldhouse); Dave Schulthess, Sports Publicity Director, Ext. 2512 (Smoot Administration); Floyd R. Taylor, Ticket Manager, Ext. 2636 (Fieldhouse).

# 1961 RESULTS

Date	Opponent	Site	BYU	Opp.
Sept. 16	San Jose State at Provo		13	14
Sept. 23	West Texas State at Canyon		8	55
Sept. 30	North Texas State at Denton		30	41
Oct. 7	Montana at Provo		7	6
Oct. 14	Utah at Salt Lake		20	21
Oct. 21	Wyoming at Laramie		8	36
Nov. 4	Utah State at Provo		8	31
Nov. 11	Colorado State at Provo		30	16
Nov. 18	Oregon State at Corvallis		0	35
Nov. New	Mexico at Albuquerque		6	34

(Season Record: 2-8)

(League Record: 2-4)

## FROSH RESULTS

Date	Opponent	Site	BYU	Opp.
Oct. 13	Utah State at Provo		21	0
Oct. 27	Utah at Salt Lake City		14	18
Nov. 3	Air Force at Air Force Ac.		6	18
Nov. 18	Utah at Provo		14	13

(2-2)

# STANDINGS

	Conference				All Games			
	W	L	T	Pct.	W	L	T	Pct.
Utah State	5	0	1	.917	9	0	1	.950
Wyoming	5	0	1	.917	6	1	2	.778
Utah	3	3	0	.500	6	4	0	.600
New Mexico	3	3	0	.500	6	4	0	.600
Montana	2	4	0	.333	2	6	0	.250
<b>Brigham Young</b>	<b>2</b>	<b>4</b>	<b>0</b>	<b>.333</b>	<b>2</b>	<b>8</b>	<b>0</b>	<b>.200</b>
C.S.U.	0	6	0	.000	0	10	0	.000

## NATIONAL RANKINGS

### Individual

Punting: 6th—Bill Wright; 46 - 40.5 average  
 Scoring: 17th—Paul Allen; 58 points  
 Kickoff Returns: 2nd—Paul Allen; 481 40.1 avg.

### Team

Punting: 12th—53 Punts; 38.9 yard average  
 Kickoff Returns: 6th—41; 940 yards 22.9 avg.  
 Point After TD: 3rd—18 TD, 22 EPts. 122%  
 Most Opponents Fumbles Recovered:  
 Tie—3rd with 21 recoveries

# NEW CONFERENCE

The Western Athletic Conference starts its first year of life with a priceless heritage—the golden opportunity for growth, progress and prosperity in the future, both immediate and far-distant, that is virtually unlimited.

Charter members of the Western Athletic Conference are six universities from the heart of the Rocky Mountain-Southwest, the most progressive and rapidly growing area in America. The member schools are Arizona, Arizona State, Brigham Young, New Mexico, Utah and Wyoming.

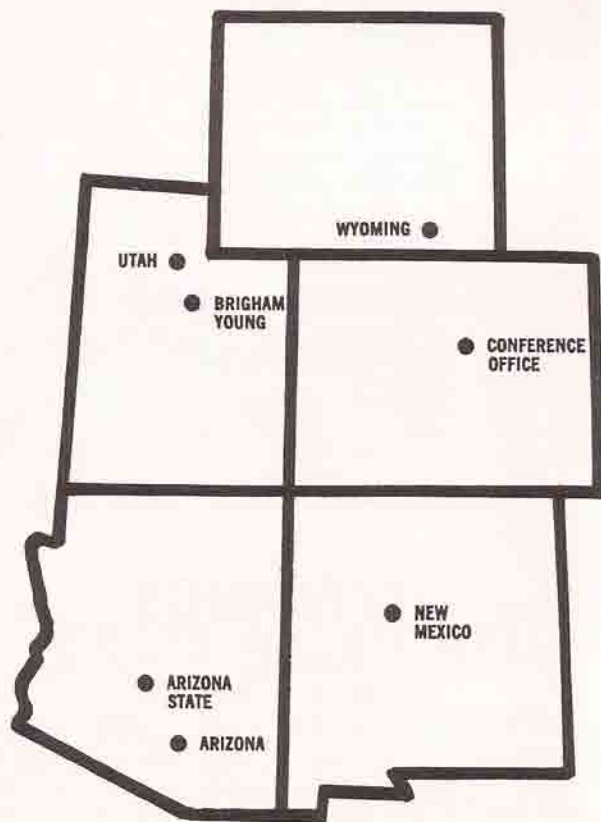
Keeping in step with the growth of the area in which they are located, each of the six WAC universities has experienced explosion-rate growth, both in facilities and the number of students it educates, in the last decade and the immediate future for each seems to promise even more progress and prosperity

Because of this, the founding members have mutual interests and mutual problems and a common desire to solve these problems, particularly as they relate to intercollegiate athletics, together. Each WAC university has the desire to integrate a strong, but sensibly-balanced intercollegiate athletics program with sound educational objectives and it was with this keynote thought that the Western Athletic Conference was founded.

Another positive factor in WAC's favor is the fact that four of the six member universities are located in metropolitan areas of more than 250,000 population. The inviting, healthy climate of the Rocky Mountain-Southwest not only is ideal for outdoor athletic activity almost every day of the year but it captivates new converts each year and should, if anything, speed up the pace of the area's population and economic growth.

There will be no looking back for the Western Athletic Conference. All sights are set confidently toward the future. A major conference with a bright new—and clean—slate. That's the enviable—and not-to-be-repeated—position in which WAC finds itself as it prepares for the inaugural 1962 football season, a campaign that marks the kickoff to a new era of intercollegiate athletic excellence in this part of America.

Brigham Young University and Arizona will share the honors in the first WAC athletic event Sept. 22 when the two football teams meet on the gridiron in Tucson.



## WAC MEMBERS

ARIZONA .....	Tucson, Arizona
ARIZONA STATE .....	Tempe, Arizona
BRIGHAM YOUNG .....	Provo, Utah
NEW MEXICO .....	Albuquerque, New Mexico
UTAH .....	Salt Lake City, Utah
WYOMING .....	Laramie, Wyoming

## ON THE ROAD

**PACIFIC at Stockton**—The Cougars will leave Provo at 9 a.m. (Sept. 14) and arrive in Stockton at 10:30 (PST). The flight will be aboard an Eddy Airline Constellation. The team will stay at the Ambassador Hotel in Stockton. The return flight is scheduled for 11 p.m. (Sept. 15) with arrival in Provo set for 2:30 a.m.

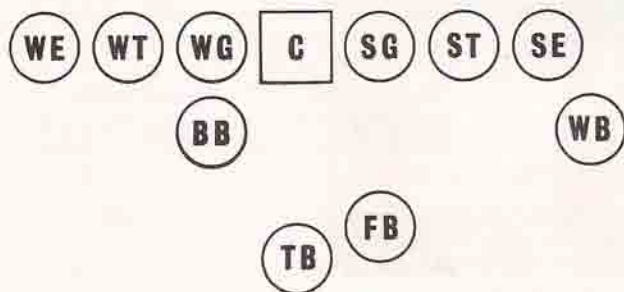
**ARIZONA at Tucson**—Charter flight with Eddy Airline leaves Provo at 2 p.m. (Sept. 21) and arrives in Tucson at 4:30 p.m. The team will stay at the Desert Inn in Tucson, and leave on the return flight immediately after the game (11 p.m. estimated departure time). Arrival in Provo will be about 1:30 a.m.

**COLORADO STATE UNIV. at Fort Collins**—Leave Provo aboard two Eddy Airline planes at 2:30 p.m. (Oct. 5), arrive at Fort Collins at 4:30. Team will stay in Northern Hotel, leave on return trip immediately after the game (11 p.m.), and arrive in Provo 1 a.m.

**MONTANA at Missoula**—Departure on Eddy Airline Constellation set for noon (Oct. 19), with arrival at 2:30 p.m. in Missoula. Team will stay at Missoula Hotel, leave after the game at 7 p.m. with arrival set for 9:30 p.m. in Provo.

**WESTERN MICHIGAN at Kalamazoo**—Departure from Provo aboard Eddy Airline Constellation set for 7 a.m. (Nov. 9). Travel time is 6½ hours, and team will stay at Harris Motor Inn in Kalamazoo. The return flight is scheduled for 5:30 p.m. following the game.  
(All departure and arrival times are estimated).

## OFFENSE



## ADMINISTRATION



Dr. Ernest L. Wilkinson, now in his 12th year as President of BYU.

Dr. Wilkinson  
President



Dr. Milton F. Hartvigsen heads College of Physical Education.

Dr. Hartvigsen  
College Dean



Dr. Edwin R. Kimball, veteran Director of Athletics at BYU.

Dr. Kimball  
Athletic Director

## COUGAR COACHES



Earl Lindley  
Assistant Coach



Glen Tuckett  
Assistant Coach



Clint Whitfield  
Assistant Coach



Jerry Doman  
Assistant Coach



LaVell Edwards  
Assistant Coach



Chris Apostol  
Freshman Coach

## COACHING STAFF

### HAL D. MITCHELL (UCLA '53)

Now in his second year as head coach at BYU, Hal Dwane Mitchell was selected for the job two years ago. At age 30 he became the youngest varsity coach in BYU history. It is hoped his former success on the gridiron will carry over into college ball.



A native of Los Angeles, Mitchell has crammed a valuable amount of playing and coaching experience into his football career. He captained his high school, college and service teams as a player, and has reaped his share of success as a coach, too.

After graduation from high school, Mitchell joined the football forces at UCLA, playing regular tackle three years under the late Red Sanders. Hal captained the Bruin squad in 1951 and was chosen first string tackle on the All-PCC selections.

As an all-star he participated in East-West Shrine game, the Hula Bowl, and the College All-Star game in Chicago. He was tutored under such coaches as Bud Wilkinson of Oklahoma, Bobby Dodd of Georgia Tech, Frank Broyles of Arkansas, and Jim Lee Howell of the New York Giants.

Drafted by the Giants, Mitchell spent the better part of two seasons as a regular tackle. Howell stated that Mitchell was the most conscientious and dedicated player on the team.

As a commissioned officer in the Army, Hal was assigned to Fort Lee, Virginia. He captained the post team his first year there, then served as player-coach during the second season. In 1954 he was named the most valuable player in Army football.

Coach Mitchell began his coaching career at Mira Costa High School in Southern California, where he was line coach. He was named head coach at Hart High School in Newhall, and his team at Hart had an 11-1 record.

Hal came to BYU in 1959 as freshman coach. In two seasons his teams ran up a 7-1 record, including an undefeated season in 1960. In his first year with the varsity in '61 his record was 2-8.

He is married to the former Patricia Ann Armstrong, also a native of Los Angeles, and they have five children; three boys and two girls.

# ASSISTANT COACHES

## CHRIS APOSTOL (Utah State '50)

Chris Apostol came to BYU in 1959 as an assistant coach to Tally Stevens. He was formerly head coach at Ogden High School, where his team won 11 straight victories in taking the Utah Class "A" football championship in 1958.

A native of Bingham, Utah, Chris was an all-around athlete and studentbody president at Bingham before enrolling at Utah State in 1946. He was a member of the Aggie varsity line for three years, then joined the Ogden H.S. staff in 1950. He was named head coach in 1953. His prep record was 44 wins, 13 losses, two ties.

## EARL LINDLEY (Utah State '54)

Earl came to BYU last year from Idaho Falls High School in Idaho, where he served as head football coach. A native of Wellsville, Utah, he was an all-state end at South Cache H. S. before enrolling at Utah State.

He proved to be one of the Aggie football greats, winning honors as end and halfback before graduating in 1954. He received his master's degree from USU in 1957.

Lindley joined the Edmonton Eskimos in the Canadian League, playing three years as regular with that team before leaving the game because of an injury.

## CLINT WHITFIELD (UCLA '59)

Another member of the staff from UCLA is Clint Whitfield who also doubles as wrestling coach at BYU.

A native of Loma Linda, California, Clint attended Los Angeles H. S. and was the first string guard at UCLA for three seasons under Red Sanders. Clint won All-PCC honors in football, represented UCLA as heavyweight wrestler, and captained the Bruin grapplers in 1958.

He is working toward a master's degree. He coached at Oxnard H.S. in California prior to his appointment to BYU.

## JERRY DOMAN (Oregon State '59)

Youngest man on the staff, 24-year old Jerry Doman joined the Cougars last year. He came to Provo from Oregon State, where he was a freshman football coach.

A native of Ontario, Oregon, he was an all-state end in high school. Enrolling at OSC, he was fullback and outside linebacker as a sophomore, moved to end his junior and senior years. He was captain of the team in 1959.

## GLEN TUCKETT (Utah '53)

Joining the varsity staff this fall is Glen Tuckett, who came to BYU three years ago as baseball coach. He coached the frosh footballers last year.

A graduate of the University of Utah and veteran professional baseball player, Tuckett played with the Salt Lake Bees and teams in the Western International League.

He coached six years at West High School in Salt Lake City prior to coming to BYU. He is a native of Murray, Utah.

## LaVELL EDWARDS (Utah State '52)

Newest member of the varsity staff is LaVell Edwards, who came to BYU last spring from Granite High School, Salt Lake City.

At Granite, Edwards served six years as head football coach, wrestling and golf coach.

A native of Orem, Utah, he was all-state lineman, and from 1948 to 1952 he played football at Utah State where he won all-conference honors.

Edwards is a former president of the Utah State High School Coaches Association, and is currently working on his Ph.D.

## ROD KIMBALL, TRAINER

Rod Kimball has served all but one of the last 24 years as team trainer. As veteran member of the staff, he dispenses humor, wisdom and other morale-building qualities along with his physical therapy.

A native of Jordan, Utah, Rod was an outstanding athlete and student leader. He won letters in two sports at Utah State and BYU. He has traveled countless miles with the Cougars since joining the athletic staff in 1937.

## OUTLOOK

While many factors seemed to be operating against the Cougars in '61, one element—time—has favored football at Cougarville since the close of the last campaign. A year ago, Coach Hal Mitchell and his staff were trying to fit one of the thinnest squads in the school's history into a new offense. It was a struggle in every sense of the word, but the Cats managed to pick up a couple of wins for their efforts.

Now, a year later, and with time bringing the two forces into balance, the Cougars are much better prepared to encounter the opposition. The system, which has been modified somewhat to produce more striking power, is now a fixture, and there is more talent on hand to get it rolling at the right time in the right direction.

While the outlook is generally improved, there are still problems to be wrestled with before the Cougars are expected to become a force in the new Western Athletic Conference. There are soft spots in the Cougar line, and a better balanced attack is needed to give the offense the punch it needs to bowl over opponents.

At the end of the '61 season, Mitchell and staff launched a search for more talent. The drive seems to have produced some dividends. The number of transfers acquired exceeds by far any effort in this direction at BYU in recent years. The problem is, the quality of the new talent is still something of a question. The transfers, along with the sophomores, still have to prove themselves.

While the loss of 13 lettermen hasn't exactly emptied the ranks, the departures did take more than half of the regulars. Included among those not returning is wingback Paul Allen, who scored 38 points and led the nation in kickoff returns with over 40 yards per return last fall. Two starting tackles and two starting guards are also missing, so it will be understandable if the Cougars have some trouble forming a forward wall. The tackle slots are especially vulnerable.

If all goes well, the BYU backfield should measure up to expectations. Eldon Fortie moved the offense with deftness last year, and he will be back at tailback again this fall. Backing Fortie is a rangy sophomore back, Phil Brady, and a block-busting Hawaiian tailback, Lou Santiago. Kent Nance, the prized sophomore from California, will be playing at fullback along with last year's regular Bill Nelson. All of the blocking backs are returning, and Mitchell has moved Gene Frantz and Doran Merkley (a former tailback) to wingback to strengthen that position.

Unless overtaken by some misfortune, the Cougars can expect a better season in 1962. This isn't the kind of squad any opponent can afford to take lightly.

## LETTERMEN

### LETTERMEN NOT RETURNING—13

#### LEFT END:

LEFT TACKLE: \*Scott Wartena (first unit)

LEFT GUARD: \*\*\*Wayland Sheppard (first unit)

CENTER: \*\*\*Steve Dangerfield (second unit)

RIGHT GUARD: \*\*\*Bruce Kochevar (first unit),  
\*Bruce Handley (second unit) \*Bry Lake (third unit)

RIGHT TACKLE: \*\*\*Kent Horne (first unit), \*\*\*Steve Sullivan (third unit)

RIGHT END: \*\*\*Don Peterson (second unit), \*Dave Cass (first unit)

WINGBACK: \*\*Dion Frazier (second unit), \*\*\*Paul Allen (first unit)

#### BLOCKING BACK:

TAILBACK: \*Bill Jackson (third unit)

#### FULLBACK:

TOTAL: Six from first team, four from second team, three from third team.

### LETTERMEN RETURNING—22

LEFT END: \*Lloyd Smith (first unit), \*Jim Hawkins (third unit), Glen Richardson, Lynn Mathie.

LEFT TACKLE: \*\*Val Weenig (second unit)

LEFT GUARD: \*\*Roger DuPaix (first unit), \*Bob Barrow (third unit)

CENTER: \*\*Mike Brady (first unit)

RIGHT GUARD: \*Mike Conrad

RIGHT TACKLE: \*Devon Stone (second unit)

RIGHT END: \*Dick Wood (third unit), \*Jeff Livingston (blocking back), \*\*Dan Taylor (second unit center)

WINGBACK: \*\*Gene Frantz (third unit) \*Doran Merkley (second unit tailback)

BLOCKING BACK: \*Gordon Blackham (first unit), \*\*Dick Darling (second unit), \*Marshall Hall (reserve)

TAILBACK: \*\*Eldon Fortie (first unit)

FULLBACK: \*\*Bill Wright (second unit), Bill Nelson (first unit), \*John Malarsie (third unit)

TOTAL: Five from first team, six from second team, five from third string.



## BY POSITION

**ENDS—SOMEWHAT STRONGER:** Flock of sophomore and junior prospects need experience. Juniors Lloyd Smith (a regular as sophomore) and Dick Wood are probable starters. Lettermen Jeff Livingston and Dan Taylor moved to end for added strength. Jim Kimmel, injured last year, and Glen Richardson, who missed '61 season, both good prospects.

**TACKLES—WEAKER:** Starters Kent Horne (265) and Scott Wartena (201) both missing. Only two lettermen to spread in this position, senior Val Weenig and junior Devon Stone. Hawaiian John Kawaa good sophomore prospect, other help must come from transfers. Without more experience, could be trouble spot.

**GUARDS—SAME OR STRONGER:** More prospects to choose from in '62, although only three lettermen available. Roger DuPaix, senior, and Mike Conrad, on injured list in '61, are top candidates. Transfer Jay Vesterfelt and sophomore Bill Marriott both pressing for first-string berth, but experience missing.

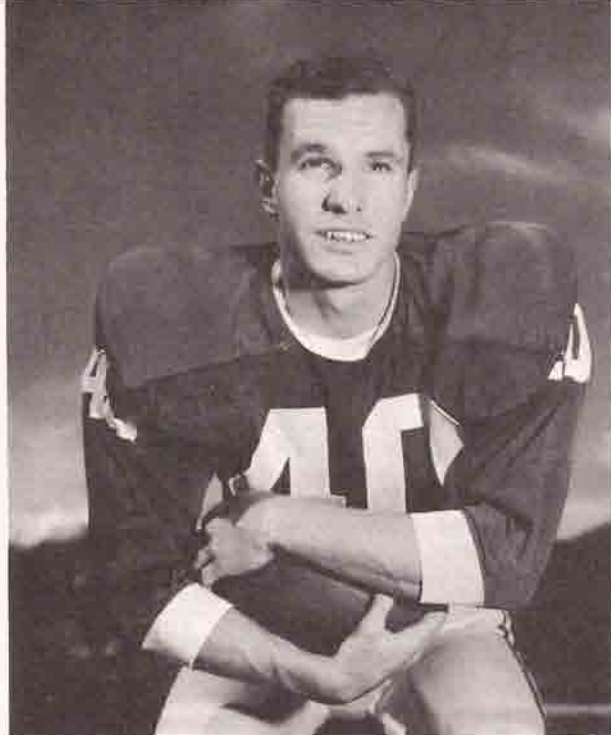
**CENTERS—ABOUT THE SAME:** Although veteran Mike Brady is ranked among best individual centers in the league, depth missing. Back Steve Jesse, a transfer, has been moved into center slot, transfers John Wilson and Lynn Mulleneaux will both be pressing Brady. This spot could be stronger as season progresses.

**WINGBACKS—ABOUT THE SAME:** No. 1 and 2 wingbacks in '61, Paul Allen and Dion Frazier, both missing. But Cougars have fortified spot by moving Gene Frantz, former end, and Doran Merkley, tailback in 1961, to this spot. If Rick Ashmore is whole he will help with depth.

**BLOCKING BACKS—STRONGER:** No major losses here from last year, and '61 material improved with age. Regular Gordon Blackham, along with two-year letterman Dick Darling and Marshall Hall, will have transfer support in form of Charley Bell and Jack Linder.

**FULLBACKS—STRONGER:** A soft spot in '61, this position has been strengthened with promising prospects led by sophomore Kent Nance. Last year's regular, Bill Nelson, is consistent performer. Five other prospects could make this one of stronger positions.

**TAILBACKS—STRONGER:** Eldon Fortie, acknowledged as the key to the offense, is back. Phil Brady, a rangy sophomore, now with varsity, plus pair of promising transfers, Lou Santiago and Grover Garvin. Additional help needed with passing game.



**ALL-CONFERENCE CANDIDATE — Eldon Fortie, senior tailback for the Cougars, heads into 1962 campaign with fine football record. The 167-pound Salt Laker led teammates in rushing, passing, total offense last year.**

## THREE-DEEP

- WS ENDS—**\*Lloyd Smith, Guy Hale, \*Lynn Mathie  
**WS TACKLES—**\*\*Val Weenig, Bob Tennyson, Paul Knoblauch  
**WS GUARDS—**Bill Marriott, Nairne Farner, \*Mike Conrad  
**CENTERS—**\*\*Mike Brady, John Wilson  
**SS GUARDS—**\*\*Roger DuPaix, Jay Vesterfelt, Barry Corchnoy  
**SS TACKLES—**\*Devon Stone, John Kawaa, Carl Banker  
**SS ENDS—**\*Dick Wood, \*Glen Richardson, Mike Jacobsen  
**WINGBACK—**Alan Robinson, \*Doran Merkley, \*\*Gene Frantz  
**BLOCKING BACKS—**\*Gordon Blackham, \*\*Dick Darling  
**FULLBACKS—**Kent Nance, \*Bill Nelson, Butch Ogawa  
**TAILBACKS—**\*\*Eldon Fortie, Lou Santiago, Phil Brady  
 \*BYU Letters Won

# 1962 FOOTBALL ROSTER

31	Terry Armstrong	FB
—	Jim Arnout	G
10	Rick Ashmore	WB
90	Frank Baker	S
75	Carl Banker	T
65	Bob Barrow	G
24	Charley Bell	BB
20	Gordon Blackham	BB
78	Columbus Boone	T
54	Mike Brady	C
42	Phil Brady	TB
63	Mike Conrad	G
60	Barry Corchnoy	G
26	Dick Darling	BB
79	Dee Davis	T
67	Roger DuPaix	G
69	Ron England	G
66	Nairne Farnert	G
40	Eldon Fortie	TB
14	Gene Frantz	WB
44	Grover Garvin	TB
82	Guy Hale	E
22	Marshall Hall	BB
86	Jim Hawkins	E
80	Mike Jacobsen	E
50	Steve Jesse	C
77	John Kawa	T
89	Jim Kimmel	E
72	Paul Knoblauch	T
28	Jack Linder	BB
87	Jeff Livingston	E
62	Danny Mahanna	G
34	John Malarsie	FB
68	Bill Marriott	G
81	Lynn Mathie	E
73	Del McCoy	T
15	Doran Merkley	WB
59	Lynn Mulleneaux	C
30	Kent Nance	FB
33	Bill Nelson	FB
32	Butch Ogawa	FB
12	Paul Richards	WB
85	Glen Richardson	E
17	Alan Robinson	WB
46	Lou Santiago	TB
88	Bruce Smith	E
—	Dennis Smith	T
83	Lloyd Smith	E
76	Devon Stone	T
74	Dean Stringham	T
91	Dan Taylor	E
70	Bob Tennyson	T
64	Jay Vesterfelt	G
43	Doug Wardell	TB
71	Val Weenig	T
21	John Wilks	BB
51	John Wilson	E
84	Richard Wood	C
41	Bill Wright	FB

## WINGBACKS:

No.	Player	Ht.	Wt.	Age	Class	Home Town
10	Rick Ashmore	6-0	184	20	Junior	Newhall, California
12	Paul Richards	6-0	185	19	Soph.	Fresno, California
14	Gene Frantz**	6-3	185	21	Senior	Salt Lake City, Utah
15	Doran Merkley*	6-1	192	20	Junior	Blackfoot, Idaho
17	Alan Robinson	6-0	185	19	Soph.	Culver City, California

## BLOCKING BACKS:

20	Gordon Blackham*	5-11	195	20	Junior	Salt Lake City, Utah
21	John Wilkst	5-11	175	22	Soph.	Jacksonville, Florida
22	Marshall Hall*	5-10	170	22	Senior	Azusa, California
24	Charley Bell†	5-9	175	19	Junior	Honolulu, Hawaii
26	Dick Darling**	5-11	190	20	Senior	Boise, Idaho
28	Jack Linder†	5-11	180	19	Soph.	Kenedy, Texas

## FULLBACKS:

30	Kent Nance	6-0	193	19	Soph.	Madera, California
31	Terry Armstrong	5-11	175	19	Soph.	Overton, Nevada
32	Butch Ogawa	5-10	170	19	Soph.	Ontario, Oregon
33	Bill Nelson*	5-10	171	19	Junior	Concord, California
34	John Malarsie*	5-11	175	20	Junior	Durango, Colorado

## TAILBACKS:

40	Eldon Fortie**	5-11	169	21	Senior	Salt Lake City, Utah
41	Bill Wright*	6-0	178	21	Senior	Salt Lake City, Utah
42	Phil Brady	6-2	190	19	Soph.	Scottsdale, Arizona
43	Doug Wardell	6-0	182	19	Soph.	Lemmon Grove, California
44	Grover Garvin†	5-10	176	19	Soph.	Yakima, Washington
46	Lou Santiago†	5-11	194	19	Soph.	Honolulu, Hawaii

## CENTERS:

50	Steve Jesse†	5-9	190	19	Soph.	Hermosa Beach, California
51	John Wilson†	6-0	190	20	Junior	Naches, Texas
54	Mike Brady**	5-11	184	20	Senior	Oak Ridge, Tennessee
59	Lynn Mulleneaux†	5-10	172	19	Junior	Snowflake, Arizona

## GUARDS:

60	Barry Corchnoy	6-0	180	18	Soph.	North Hollywood, California
62	Danny Mahanna†	5-9	195	19	Soph.	Vidor, Texas
63	Mike Conrad*	5-8	187	21	Junior	Manhattan Beach, California
64	Jay Vesterfelt†	5-10	200	20	Junior	Napa City, California
65	Bob Barrow*	5-9	168	21	Junior	Hawthorne, California
66	Nairne Farnert†	5-11	190	19	Soph.	Manhattan Beach, California
67	Roger DuPaix**	5-11	169	20	Senior	Huntington Park, California
68	Bill Marriott	5-11	185	18	Soph.	Ogden Utah
69	Ron England†	5-10	220	19	Soph.	Thatcher, Arizona
—	Jim Arnout†	6-0	210	20	Soph.	National City, California

## TACKLES:

70	Bob Tennyson†	6-2	205	19	Junior	Compton, California
71	Val Weenig**	6-2	196	20	Senior	Ogden, Utah
72	Paul Knoblauch	6-2	198	19	Junior	Riverside, California
73	Del McCoy	6-1	220	20	Soph.	Santa Rosa, California
74	Dean Stringham	6-0	218	20	Junior	Riverside, California
75	Carl Bankert†	5-11	235	21	Junior	Pasco, Washington
76	Devon Stone*	5-10	225	19	Junior	Ogden, Utah
77	John Kawa	6-0	235	19	Soph.	Honolulu, Hawaii
78	Columbus Boone	6-2	196	22	Soph.	Jacksonville, Florida
79	Dee Davis†	6-4	220	19	Junior	Bakersfield, California
—	Dennis Smith†	6-1	220	20	Soph.	Redondo Beach, California

## ENDS:

80	Mike Jacobsen	6-1	190	19	Soph.	San Diego, California
81	Lynn Mathie*	6-2	182	22	Junior	Ogden, Utah
82	Guy Hale	6-2	185	19	Soph.	Beaverton, Oregon
83	Lloyd Smith*	5-11	169	19	Junior	Knoxville, Tennessee
84	Richard Wood*	6-0	192	19	Junior	Bountiful, Utah
85	Glen Richardson*	6-1	175	20	Junior	Ogden, Utah
86	Jim Hawkins*	6-2	188	19	Junior	Richland, Washington
87	Jeff Livingston*	5-10	190	19	Junior	Ogden, Utah
88	Bruce Smith	6-2	190	19	Soph.	Seattle, Washington
89	Jim Kimmel	5-11	188	20	Soph.	Sacramento, California
90	Frank Baker*	5-9	169	30	Senior	Albuquerque, New Mexico
91	Dan Taylor**	6-1	182	22	Senior	Springville, Utah

\*Letters won

†Transfers

# OPPONENTS

## No. 1 -- UNIV. OF PACIFIC

Sept. 15 — 8 p.m. at Stockton

Location ..... Stockton, Calif.  
Enrollment ..... 2,200  
Nickname ..... Tigers  
Colors ..... Orange and Black  
Conference ..... Independent  
Stadium ..... Memorial (36,500)  
System ..... Spread T  
Head Coach ..... John Rohde  
Sports Publicist ..... Ron Reina (HO 4-1292)

**OUTLOOK**—Coach Rohde will have 23 returning lettermen, including 19 seniors. Offensively, the Tigers should have excellent striking power, but may need strengthening on defense. UOP hopes for improved season over .500 average of '61.

**SERIES RECORD**—This is only the second game between these two schools. The Tigers (with Dick Bass) won 28-8 decision at Stockton in 1958.

## No. 2 -- ARIZONA

Sept. 22 — 8 p.m. at Tucson

Location ..... Tucson, Arizona  
Enrollment ..... 15,000  
Nickname ..... Wildcats  
Colors ..... Blue and Cardinal Red  
Conference ..... Western Athletic (WAC)  
Stadium ..... Arizona (26,000)  
System ..... T with Variations  
Head Coach ..... Jim LaRue (Duke '45)  
President ..... Dr. Richard A. Harvill  
Athletic Director ..... M. R. "Dick" Clausen  
Sports Publicist ..... Frank Soltys (EA 6-5697)

**OUTLOOK**—A total of 18 lettermen returning from "best ever" squad of '61. Power has moved from backfield to line, but both will be adequate. Wildcats are WAC favorites in most preseason polls.

**SERIES RECORD**—First of three games played thus far was in 1936. Series stands at an even 1-1-1. Tie game, 14-14 played in 1957, while BYU was credited with 18-14 decision in '59.

# OPPONENTS

## No. 3 -- GEO. WASH. UNIV.

Sept. 29 — 8 p.m. at Provo

Location ..... Washington, D.C.  
Enrollment ..... 10,000  
Nickname ..... Colonials  
Colors ..... Buff and Blue  
Conference ..... Southern Conference  
Stadium ..... D of C (50,000)  
System ..... Wing T  
Head Coach ..... Jim Camp  
President ..... Dr. Thomas Henry Carroll  
Athletic Director ..... Robert K. Faris  
Sports Publicist ..... Bill Dismar (FE 8-4157)

**OUTLOOK**—Coach Jim Camp expects an improved squad over the 1961 unit which had a 3-6 season record, but may find the schedule rough with the likes of Army, Syracuse, and West Virginia. The Colonials will have a letterman in every position. Key man is Dick Drummond, all-conference halfback who tallied 48 points last year.

**SERIES HISTORY**—This is the first of two games scheduled between the two schools. A second contest is set for 1963 in Washington, D.C.

## No. 4 -- COLORADO STATE

Oct. 6 — 8 p.m. at Fort Collins

Location ..... Fort Collins, Colorado  
Enrollment ..... Approximately 6,500  
Nickname ..... Aggies, Rams  
Colors ..... Green and Gold  
Conference ..... Independent  
Stadium ..... Colorado Field (14,000)  
System ..... Winged-T  
Head Coach ..... Mike Lude (Hillsdale '47)  
President ..... Dr. William E. Morgan  
Athletic Director ..... Robert L. Davis  
Sports Publicist ..... Dick Smelser (Hunter 2-3300, Ext. 433)

**OUTLOOK**—New coach Mike Lude has 20 returning lettermen, 25 transfers, plenty of desire. However, Ram schedule includes Air Force, UCLA, Oregon State, so not too much can be expected in this building year.

**SERIES HISTORY**—One of BYU's two victories in '61 came at expense of CSU. Record now stands at 17-8-2, favor of CSU. Series began in 1922, last four games have all been upsets.

# OPPONENTS

## No. 5 -- UTAH

Oct. 13 — 1:30 p.m. at Salt Lake City

Location ..... Salt Lake City (250,000)  
Enrollment ..... Approximately 10,000  
Nickname ..... Utes, Redskins  
Colors ..... Crimson and White  
Conference ..... Western Athletic (WAC)  
Stadium ..... University Stadium (30,000)  
System ..... Multiple-T  
Head Coach ..... Ray Nagel (UCLA '50)  
President ..... Dr. A. Ray Olpin  
Athletic Director ..... James R. "Bud" Jack  
Sports Publicist ..... Harry James (EM 4-4545)

**OUTLOOK**—Fairly bright outlook with 17 returning lettermen. Exceptional balance in offensive game, much stronger defensively, too. This year the Utes are strong enough to rank as one of favorites in WAC race.

**SERIES HISTORY**—Last fall the Cougars came within one point, 20-21, of upsetting Utes. Redskins hold decisive lead with 31 wins, only two defeats, and four ties.

## No. 6 -- MONTANA

Oct. 20 — 1:30 p.m. at Missoula

Location ..... Missoula, Montana  
Enrollment ..... Approximately 4,000  
Nickname ..... Grizzlies, Silvertips  
Colors ..... Copper, Silver and Gold  
Conference ..... Independent  
Stadium ..... Dornblaser Field (10,000)  
System ..... Multiple (emphasis on single wing)  
Head Coach ..... Ray Jenkins (Colorado '42)  
President ..... Dr. Harry K. Newburn  
Sports Publicist ..... Jack Gilluly (LI 3-7241, Ext. 408)

**OUTLOOK**—Caught in de-emphasis squeeze, the 'Tips are still competitive with senior talent. Bob O'Billovich is gone, but three regular backs return. Lack of depth, thinner line will be problem.

**SERIES HISTORY**—Record of one-point victories for last two years, BYU won both with identical 7-6 score. Cats hold 10-5 series edge, but games have always been close.

# OPPONENTS

## No. 7 -- UTAH STATE

Oct. 27 — 1:30 p.m. at Logan

Location ..... Logan, Utah (18,000)  
Enrollment ..... Approximately 5,700  
Nickname ..... Aggies  
Colors ..... Navy Blue and White  
Conference ..... Independent  
Stadium ..... Romney Stadium (15,000 capacity)  
System ..... Variable-T  
Head Coach ..... John Ralston (California '51)  
President ..... Dr. Daryl Chase  
Athletic Director ..... H. B. Hansaker  
Sports Publicist ..... Karl W. Klages (SKYline  
2-4100, Ext. 261)

**OUTLOOK**—Forward wall will be weaker, especially at tackle. But Ags can expect better team balance, and defensively they will measure up with the best. Independent status may make the Aggies even tougher.

**SERIES HISTORY**—Utah State won easy 31-8 decision at Provo in '61, now hold 21-13-3 record. Series started in 1922.

## No. 8 -- NEW MEXICO

Nov. 3 — 1:30 p.m. at Provo

Location ..... Albuquerque, New Mexico (250,000)  
Enrollment ..... 8,086  
Nickname ..... Lobos, Wolfpack  
Colors ..... Cherry and Silver  
Conference ..... Western Athletic (WAC)  
Stadium ..... University Stadium (30,000)  
System ..... Wing-T  
Head Coach ..... Bill Weeks (Iowa State '51)  
President ..... Dr. Tom L. Popejoy  
Athletic Director ..... Pete McDavid  
Sports Publicist ..... George McFadden (247-0391,  
Ext. 329)

**OUTLOOK**—Could be one of better teams in NMU history with good overall depth, 19 returning lettermen. HB Bobby Santiago and QB Jim Cromartie among the best in new league. Bob Bouyer and George Heard are top linemen.

**SERIES HISTORY**—Last year's 34-6 win by Lobos boosted NMU's series edge to 6-4-1. Cougars have lost last two by big margins. Series began in 1951.



# YEAR BY YEAR

# RECORDS

## BYU Opp.

## MSAC

Year	W.	L.	T.	Pts.	Pts.	Head Coach	Finish
1922	1	5	0	10	185	A. G. Twitchell	—
1923	2	5	0	47	156	A. G. Twitchell	—
1924	2	3	1	44	61	A. G. Twitchell	—
1925	3	3	0	69	81	C. J. Hart	—
1926	1	5	1	49	115	C. J. Hart	—
1927	2	4	1	105	118	Ott Romney	—
1928	2	3	2	74	56	Ott Romney	—
1929	5	3	0	140	115	Ott Romney	—
1930	4	1	3	135	86	Ott Romney	—
1931	4	4	0	69	104	Ott Romney	—
1932	7	1	0	175	43	Ott Romney	—
1933	4	4	0	75	65	Ott Romney	—
1934	4	5	0	144	169	Ott Romney	—
1935	4	4	0	78	90	Ott Romney	—
1936	4	5	0	123	123	Ott Romney	—
1937	6	3	0	164	41	Eddie Kimball	—
1938	4	3	1	93	49	Eddie Kimball	2nd-Tie
1939	5	2	2	110	90	Eddie Kimball	4th
1940	2	4	2	79	93	Eddie Kimball	4th
1941	4	3	2	136	100	Eddie Kimball	2nd-Tie
1942	2	5	0	55	133	Floyd Millett	7th
1946	5	4	1	94	119	Eddie Kimball	4th
1947	3	7	0	168	182	Eddie Kimball	7th
1948	5	6	0	135	199	Eddie Kimball	5th
1949	0	11	0	105	362	Chick Atkinson	6th
1950	4	5	1	169	292	Chick Atkinson	5th
1951	6	3	1	215	184	Chick Atkinson	5th
1952	4	6	0	154	240	Chick Atkinson	5th
1953	2	7	1	172	277	Chick Atkinson	7th-Tie
1954	1	8	0	96	188	Chick Atkinson	8th
1955	1	9	0	104	300	Chick Atkinson	8th
1956	2	7	1	147	232	Harold Kopp	7th
1957	5	3	2	134	138	Harold Kopp	2nd
1958	6	4	0	189	152	Harold Kopp	3rd
1959	3	7	0	101	167	Tally Stevens	5th-Tie
1960	3	8	0	102	207	Tally Stevens	5th-Tie
1961	2	8	0	130	289	Hal Mitchell	5th-Tie

## SEASON RECORDS—TEAM

Most yards gained, total offense	3,003—1951 (10 games)
Most yards gained, rushing offense	2,499—1958 (10 games)
Most yards gained, passing offense	1,286—1956 (10 games)
	128.6 yd. avg.
Most passes attempted	265—1956 (26.5 average per game)
Most passes completed	105—1956 (.396 average)
Most passes had intercepted	24—1956 (265 attempts)
Best completion percentage	.421—1957 (156 attempts)
Most first downs	145—1953
Best punting average	43.2 yards—1959
Most punts	63—1956 (2,260 yards)
Most yards, punt returns	677—1948
Best average, punt returns	19.5 yards—1948 (23 returns)
Most yards, kickoff returns	994—1960 (41 returns)
Best average, kickoff returns	24.2 yards—1960 (41 returns)
Fewest fumbles lost	9—1957
*Most opponents' fumbles recovered	32—1957 (of 53)
Most yards penalized	602—1957
Fewest yards penalized	204—1953 (10 games)
Most points scored	215—1951
Best passing defense	60.5 yards per game—1952
Most consecutive victories	7—1937-38
Longest undefeated string	8—1937-38
*Ties National Record	

## RECORDS—ONE GAME

Most points scored, any game	67—1951 (Western State 7)
Most points scored, conference game	54—1937/
	(Utah State 0)
Most points scored, one half	54—1951 (Western State)
	32—1956 (Denver)
Total offense	580 yards—1951 (Western State)
	505—1958 (Montana)
Rushing offense	465—1958 (Montana)
Passing offense	239 yards—1956 (Utah State)
Passes attempted	43—1956 (New Mexico)
Passes completed	22—1956 (New Mexico)
Passes had intercepted, one game	5—1956 (Wyoming)
Opponents' passes intercepted, one game	6—1951
	(Western State)
Most first downs	24—1956 (New Mexico)
First downs rushing	22—1958 (Montana)
Most punts	13—1956 (Wichita) 368 yards
Most fumbles recovered	7—1956 (Wichita)
Best punting percentage	54.3—1959 (Wyoming)
Most yards penalized	216—1951 (Western State)
Fewest yards penalized	0—1953 (Utah)
	0—1956 (Fresno State)
	0—1961 (Oregon State)
Most yards, kickoff returns	203—1956 (Denver)
Fewest first downs, one game	4—1956 (Wichita)
Poorest total offense, one game	47—1956 (Wichita)
Poorest rushing offense one game	5—1956 (Wichita)
Poorest passing offense, one game	0—1957 (New Mexico)
Best rushing defense, one game	-.21 yards—1951
	(Western State)
Best pass defense, one game	-.2—1959 (New Mexico)

# RECORDS

## SINGLE GAME RECORDS FOR BOTH TEAMS

Most points scored	92—1956 (Denver 58, BYU 34)
Total offense	842 yards—1952 (Arizona State)
Rushing offense	674 yards—1958 (Fresno State)
Passing offense	404 yards—1951 (Western State)
Poorest rushing offense	235 yards—1950 (Pepperdine)
Poorest passing offense	12 yards—1953 (Utah State 8, BYU 4)
Most passes attempted	65—1957 (Arizona)
Most passes completed	30—1951 (Arizona)
Most passes intercepted	8—1950 (Pepperdine)
	8—1951 (Western State)
Most first downs	43—1953 (Utah) BYU 22, Utah 21
	41—1952 (Arizona State) AS 21, BYU 20
Most punts	17—1957 (Wyoming)
Most fumbles	17—1955 (Los Angeles State) LAS 10, BYU 7
Most fumbles lost	8—1951 (Wyoming)
	8—1954 (Arizona State)
	8—1954 (Montana)
Most yards penalized	256 yards—1951 (Western State)
	BYU 216, WSC 40

## INDIVIDUAL RECORDS—SEASON

Most yards, total offense	986—1956 by Carroll Johnston
	891—1961 by Eldon Fortie
Most yards, rushing	822—1951 by Ray Oliverson
Most yards, passing	982—1947 by Rex Olsen
Most passes attempted	167—1956 by Carroll Johnston
Most passes completed	79—1947 by Rex Olsen
Most passes had intercepted	15—1956 by Carroll Johnston
Most touchdown passes	8—1956 by Carroll Johnston
Best completion percentage	.500—1947 by Rex Olsen

### PASS RECEIVING:

Most receptions	32—by Owen Skousen (1952)
Most yardage on reception	439—by Owen Skousen (1952)
Most touchdown receptions	3—by Owen Skousen (1952)
	3—by Dewey Brundage (1952)
	3—by Paul Allen (1961)

### PUNTING:

Best punting average, season	44.8 yards—Gary Dunn (1959)
	44.1 yards—Dalton Overstreet (1954)
	42.4 yards—Rex Berry (1950)
Most punts, one season	51—by Lyle Koller (1948)
	49—by Carroll Johnston (1957)
Most yards punt returns	252—by Don Bushore (1948)
	in 11 returns
Best average punt return	22.9 yards by Don Bushore (1948)
Most points scored	90—by Ray Oliverson (1951)
Most touchdowns scored	15—by Ray Oliverson (1951)
Most points after touchdowns	22—by Bob Karpowitz (1950)
Best PAT percentage	.917—by Bob Karpowitz (1950)
	22 out of 24
Most consecutive PAT	14—Bob Karpowitz (1950)
Most yards kickoff returns	603—by Bruce Samples (1960)
	481—by Paul Allen (1961)
Best kickoff return average	40.1—by Paul Allen (1961)

# RECORDS

## GAME RECORDS—INDIVIDUAL

Most yards, total offense	217—Carroll Johnston (1956)
Most yards, rushing	179—Dave Chadwick (1948) Montana
Most yards, passing	223—Carroll Johnston (1956) Utah State
Most passes attempted	30—Carroll Johnston (1956)
	Utah State
Most passes completed	18—Carroll Johnston (1956)
	New Mexico
Most touchdown passes	3—Carroll Johnston (1956)
	New Mexico
Most pass receptions	8—Burt Bullock (1956) Utah State
Most yards pass reception	134 by Burt Bullock (1956)
	Utah State
Best punting average	54.3—Gary Dunn (1959) Wyoming
Longest scoring run from scrimmage	93—Weldon Jackson (1958) Fresno State
	79—Dave Chadwick (1948) Montana
	79—Weldon Jackson (1958) Utah State
Longest scoring pass play	70 yards—Carroll Johnston to Tom Clark, 1956 (Fresno State)
Longest non-scoring pass play	65 yards—Jim Eccles to Don Benson, 1949 (Pepperdine)
Longest punt	78—Bill Wright (1961) Wyoming
Longest punt return	81—Hal Lewis (1958) Colo. State
Longest interception return	85 yards—Marcell Chatterton (1946) Denver
Most successive conversions	14—Bob Karpowitz (1950)

## CAREER RECORDS—INDIVIDUAL

Most points scored	108—Ray Oliverson (18 TD) 1950-51
Most yards rushing	1,449—Weldon Jackson (56-57-58)
Most yards passing	1,702—Carroll Johnston (55-56-57)
Most passes attempted	329—Carroll Johnston (55-56-57)
Most passes completed	129—Carroll Johnston (55-56-57)
Most passes had intercepted	24—Carroll Johnston (55-56-57)
Most touchdown passes	13—Carroll Johnston (55-56-57)
Most yards total offense	1,818—Carroll Johnston (55-56-57)
Most passes received	60—Owen Skousen (51-52-55)
Most yards pass receptions	896—Owen Skousen (51-52-55)
Best average punt returns	22.9—Don Bushore, 1948 (Season)
Most touchdowns scored	15—Ray Oliverson, 1951 (Season)
Best punting average	42.9—Gary Dunn (1958-59) Career

## MISCELLANEOUS RECORDS HELD BY BYU

Lowest average allowed per punt return	2.6—1957
Most opponents' fumbles recovered	32—1957 (Ties National Record)
Most passes attempted	43—vs. New Mexico, 1956 (Game)
Most passes had intercepted	7—vs. Utah, 1958 (Game)
Most yards penalized	216—vs. Western State, 1951 (Game)
Most opponents' fumbles recovered	7—vs. Wichita, 1956 (Game)

# PAST SEASONS

BYU	1922	Opp.	BYU	1923	Opp.
3	Utah State	41	16	Montana State	15
0	University of Utah	49	6	Colorado Aggies	14
0	Colorado Mines	49	0	Colorado U.	41
7	Wyoming	0	0	Utah	15
0	Colorado Aggies	33	19	Western State	0
0	Wyoming	13	0	Utah State	40
			6	Colo. College	31
10	1-5	185	47	2-5	156
BYU	1924	Opp.	BYU	1925	Opp.
3	Colo. College	0	7	Colorado Aggies	21
0	Montana State	13	7	Colorado College	6
6	Utah	35	0	Utah State	14
9	Utah State	13	0	Utah	27
26	Western State	0	39	Western State	6
0	Colorado Mines	0	16	Montana State	7
44	2-3-1	61	69	3-3	81
BYU	1926	Opp.	BYU	1927	Opp.
0	California Aggies	17	0	Colorado Aggies	29
6	Colorado Teachers	12	0	California Aggies	0
0	Utah State	0	7	Colorado State	21
30	Western State	0	0	Utah State	22
0	Montana State	27	60	Western State	7
7	Utah	40	0	Utah	20
6	Colorado Aggies	19	38	Colorado Mines	19
49	1-5-1	115	105	2-4-1	118
BYU	1928	Opp.	BYU	1929	Opp.
9	College of Idaho	6	10	Nevada	7
6	California Aggies	6	0	California Aggies	19
6	Colorado Aggies	15	12	Montana State	13
46	Western State	0	7	Utah State	6
0	Utah State	10	33	Western State	12
7	Montana State	19	13	Utah	45
0	Utah	0	25	Colorado Teach.	13
			40	Wyoming	0
74	2-3-2	56	140	5-3	115
BYU	1930	Opp.	BYU	1931	Opp.
19	Wyoming	12	7	U.A.Y. All-Stars	3
6	Nevada	6	0	U. San Francisco	25
7	Colorado Teach.	7	18	Nevada	14
7	Utah	34	0	Utah	43
25	Western State	0	31	Western State	0
39	Utah State	14	0	Colorado Teach.	6
13	Mount St. Charles	13	6	Utah State	0
19	Montana State	6	7	Wyoming	13
135	4-1-3	92	76	4-4	104
BYU	1932	Opp.	BYU	1933	Opp.
6	Montana State	0	0	U. S. Marines	21
28	Western State	6	25	Montana State	0
46	Occidental College	0	6	Utah	21
0	Utah	29	13	Western State	0
20	Colorado Teachers	2	0	Denver	6
25	Wyoming	0	25	Colorado College	0
32	Idaho State	0	0	Utah State	14
18	Utah State	6	6	Wyoming	3
175	7-1	43	75	4-4	65

# PAST SEASONS

BYU	1934	Opp.	BYU	1935	Opp.
32	Occidental	7	0	Montana State	7
20	Montana State	6	19	Greeley State	3
0	Wyoming	7	12	Colorado College	13
0	Utah	43	13	Wyoming	6
6	Colorado	48	0	Utah	32
46	Western State	0	21	Western State	2
0	Utah State	15	0	Utah State	27
34	Colorado College	19	13	Ariz. State Teach.	0
6	Denver	24			
144	4-5	169	78	4-4	90
BYU	1936	Opp.	BYU	1937	Opp.
6	Arizona U.	32	7	Greeley State	0
19	Montana State	0	0	Utah	14
33	Greeley State	0	34	California Aggies	0
0	Utah State	13	0	Colorado	14
0	Utah	18	10	Portland	13
26	Western State	12	21	Western State	0
7	Denver	35	19	Wyoming	0
32	Wyoming	7	54	Utah State	0
0	Colorado College	6	19	Montana State	0
123	4-5	123	164	6-3	41
BYU	1938	Opp.	BYU	1939	Opp.
19	Arizona State	0	25	Arizona State	0
20	Denver	0	13	Colorado State	12
24	Wyoming	13	13	Utah	35
7	Utah	7	7	Nevada	0
3	Portland	6	18	Greeley State	6
0	Utah State	3	21	Denver	18
0	Colorado	8	0	Utah State	0
20	Colorado State	12	6	Colorado	12
			7	Wyoming	7
93	4-3-1	49	110	5-2-2	90
BYU	1940	Opp.	BYU	1941	Opp.
6	Nevada	6	7	Montana State	20
6	Utah	12	13	Denver	7
20	Wyoming	0	6	Utah	6
20	Texas Tech	21	13	U. San Francisco	25
12	Utah State	7	28	Utah State	0
0	Denver	9	23	Wyoming	7
2	Colorado	25	13	Colorado	13
13	Colorado State	13	7	Colorado State	22
			26	Greeley State	0
79	2-4-2	93	136	4-3-2	100
BYU	1942	Opp.	BYU	1946	Opp.
12	Montana State	6	13	Western State	2
6	Wyoming	13	13	Montana State	13
12	Utah	7	6	Denver	26
6	Utah State	9	10	Utah	35
6	Denver	26	0	Colorado	7
0	Colorado U.	48	6	San Jose State	14
13	Fort Douglas	24	0	Wyoming	3
			20	Utah State	0
55	2-5	133	14	Colorado A&M	6
			14	Texas Mines	13
			94	5-4-1	119

NOTE:  
No BYU football teams during war years, 1943-1945



# PAST SEASONS

BYU	1947	Opp.	BYU	1948	Opp.
45	Western State	0	14	San Diego State	6
19	Montana State	14	13	Pepperdine	0
7	Wyoming	12	7	Pacific Destroyers	9
6	Utah	28	0	Utah	30
7	Colorado	9	20	Texas Mines	34
27	Utah State	12	7	Utah State	20
6	Denver	20	26	Montana U.	20
19	San Jose State	28	6	San Jose State	21
25	Colorado A&M	27	0	Colorado A&M	20
7	San Diego State	32	15	Wyoming	14
			27	Arizona State	25
168	3-7	182			
			135	5-6	199
BYU	1949	Opp.	BYU	1950	Opp.
6	Texas Western	47	14	Idaho State	13
13	Pac. Destroyers	27	13	Arizona State	41
21	San Jose State	40	28	Pepperdine	27
0	Utah	38	28	Utah	28
21	Arizona State	49	14	Colorado A&M	27
7	Denver	35	3	Denver	42
0	Wyoming	45	34	Utah State	13
3	Utah State	22	0	Wyoming	48
14	Colorado A&M	16	7	Hawaii	39
6	Montana U.	25	28	Fort Hood	14
14	Pepperdine	28			
105	0-11	362	169	4-5-1	292
BYU	1951	Opp.	BYU	1952	Opp.
27	Idaho State	7	14	San Diego AS	7
67	Western State	7	14	New Mexico	10
20	Hawaii	7	28	Montana	7
6	Utah	7	6	Utah	34
20	Wyoming	20	14	Denver	13
6	Denver	56	13	Wyoming	24
21	Colorado A&M	19	27	San Jose State	44
28	Utah State	27	26	Utah State	27
0	New Mexico	34	6	Colorado A&M	27
20	Pepperdine	0	6	Ariz. St. (Tempe)	47
215	6-3-1	184	154	4-6	240
BYU	1953	Opp.	BYU	1954	Opp.
27	Montana	12	12	New Mexico	21
25	San Jose State	28	19	Arizona State	28
12	New Mexico	12	13	Colorado A&M	14
20	Idaho	14	7	Utah	12
7	Utah State	14	19	Montana	7
19	Denver	27	13	Utah State	45
0	Wyoming	27	0	Denver	20
12	Colorado A&M	34	13	Wyoming	34
18	Arizona State	26	0	Idaho	7
32	Utah	33			
172	2-7-1	227	96	1-8	188
BYU	1955	Opp.	BYU	1956	Opp.
0	Oregon State	33	0	Wichita Univ.	13
33	Los Angeles State	0	13	Fresno State	26
13	Montana	27	0	Colorado A&M	0
9	Utah	41	6	Utah	41
0	Denver	33	14	Montana Univ.	21
6	Wyoming	14	7	Utah State	33
21	Utah State	47	33	New Mexico	12
6	Idaho	49	34	Denver	58
0	Colorado A&M	35	6	Wyoming Univ.	7
16	New Mexico	21	34	Air Force Acad.	21
104	1-9	300	147	2-7-1	232



**TWIRLERS MIRROR ACTION** — The three flag twirlers pictured above are but a few of those who lend color to BYU games. The Cougars have a 100-piece band, under the direction of Dick Ballou, cheerleaders, song leaders.

BYU	1957	OPP	BYU	1958	OPP
14	Arizona	14	29	Fresno State	7
7	Kansas State	36	14	Utah	7
20	Montana	7	6	Colorado State	32
0	Utah	27	8	College of Pacific	28
0	Wyoming	0	6	No. Texas State	12
25	Denver	6	41	Montana	12
14	Utah State	0	13	Utah State	6
14	Fresno State	27	36	New Mexico	19
26	Colorado State	9	22	Denver	7
14	New Mexico	12	14	Wyoming	22
	5-3-2			6-4	
BYU	1959	Opp.	BYU	1960	Opp.
18	Arizona	14	34	Cal Poly	14
16	Fresno State	27	8	San Jose State	21
0	Montana	12	7	Colorado State	8
0	Utah	20	0	Utah	17
8	Utah	20	0	Arizona State	31
6	Wyoming	21	7	Montana	6
18	Utah State	0	0	Utah State	34
7	Denver	14	15	New Mexico	27
6	New Mexico	21	19	Denver	6
8	Arizona State	21	6	Wyoming	30
14	Colorado State	13	6	Hawaii	13
	3-7			3-8	

# NEWS OUTLETS

## SALT LAKE CITY

Hack Miller, Dee Chapman, and George Ferguson, Deseret News-Telegram (P.M.), 33 Richards St.

John Mooney, Jack Schroeder, Bill Coltrin, Salt Lake Tribune (A.M.), 143 South Main.

Dean Bennett, Sportscaster, Station KSL, Social Hall Ave.

Sports Radio Station KALL, 146 South Main

Sports Editor, Radio Station KUTA, 179 Social Hall Ave.

Steve Smilanich, Sports Writer, United Press-International, Tribune Building

Sports Editor, Associated Press, Tribune Building

Sports Editor, Station KDYL, 143 South Main

Paul James, Station KCPX, Social Hall Ave.

Don Spainhower, KSL-TV, Social Hall Ave.

Paul Droubay, Station KUTV, Social Hall Ave.

## PROVO

Ray Schwartz, Sports Editor, Provo Daily Herald (P.M.) 190 West 4th No.

Linn Rockwood, Station KOVO

Dave Weiser, Sports Editor, Station KEYY, 172 West Center

Sports Editor, Station KBYU, BYU Campus

Sports Editor, Station K1XX, 1200 South University

Sports Editor, Universe, Student Newspaper, BYU Campus

## OTHER AREAS

Al Warden, Sports Editor, Ogden Standard-Examiner, Ogden Utah

Sports Editor, Logan Herald Journal, Logan, Utah

Sports Editor, Station KSUB, Cedar City, Utah

John Henry, Station KOA, Denver

Chet Nelson, Sports Editor, Rocky Mountain News, Denver, Colorado

George Franco, Denver Post, Denver, Colorado

Frank Pitman, Associated Press, Denver, Colorado

Gene Meakins, United Press-International, Denver

Larry Birleffi, KFBC, Cheyenne

## PRONUNCIATION GUIDE

Butch Ogawa ..... O' gaw - wa  
 John Malarsie ..... Mal - lar - sie  
 Eldon Fortie ..... For - tie  
 Lynn Mulleneaux ..... Mull - en - no  
 Roger DuPaix ..... Dew - pay'  
 Paul Knoblauch ..... No - blaw

# BASKETBALL SCHEDULE

## BASKETBALL SCHEDULE

Nov. 30 (Fri.)	.....	Oregon at Eugene
Dec. 1 (Sat.)	.....	Oregon at Eugene
Dec. 7 (Fri.)	.....	Oklahoma at Provo
Dec. 8 (Sat.)	.....	Oklahoma at Provo
Dec. 14 (Fri.)	.....	Wichita at Provo
Dec. 15 (Sat.)	.....	Wichita at Provo
Dec. 21 (Fri.)	.....	Baylor at Provo
Dec. 22 (Sat.)	.....	Baylor at Provo
Dec. 26-28-29	.....	Quaker City Tourney at Philadelphia
Dec. 31 (Mon.)	.....	Ohio State at Columbus
Jan. 2 (Wed.)	.....	Memphis State at Memphis
Jan. 5 (Sat.)	.....	Utah State at Logan
Jan. 11 (Fri.)*	.....	Arizona State at Tempe
Jan. 12 (Sat.)*	.....	Arizona at Tucson
Jan. 19 (Sat.)*	.....	Utah at Provo
Jan. 26 (Sat.)	.....	Utah State at Provo
Feb. 2 (Sat.)	.....	Montana at Provo
Feb. 8 (Fri.)*	.....	New Mexico at Provo
Feb. 9 (Sat.)*	.....	Wyoming at Provo
Feb. 15 (Fri.)*	.....	Arizona at Provo
Feb. 16 (Sat.)*	.....	Arizona State at Provo
Feb. 23 (Sat.)*	.....	Utah at Salt Lake City
Feb. 28 (Thur.)*	.....	Wyoming at Laramie
Mar. 2 (Sat.)*	.....	New Mexico at Albuquerque

\*Conference games

## FRESHMAN BASKETBALL SCHEDULE

Nov. 23 (Fri.)*	.....	BYU Varsity at Provo
Dec. 7-22	.....	(Inter-squad games before each scheduled varsity game)
Jan. 5 (Sat.)	.....	Utah State Frosh at Logan
Jan. 11 (Fri.)*	.....	Snow College at Provo
Jan. 12 (Sat.)*	.....	Western Wyoming at Rock Springs
Jan. 19 (Sat.)	.....	Utah Frosh at Provo
Jan. 23 (Wed.)*	.....	Snow College at Ephraim
Jan. 26 (Sat.)	.....	Utah State Frosh at Provo
Feb. 2 (Sat.)	.....	Mesa College at Provo
Feb. 8 (Fri.)	.....	Western Wyoming at Provo
Feb. 9 (Sat.)	.....	Western Wyoming at Provo
Feb. 15 (Fri.)	.....	Dixie College at Provo
Feb. 16 (Sat.)	.....	Idaho State Frosh at Provo
Feb. 21 (Thur.)*	.....	Carbon College at Provo
Feb. 23 (Sat.)	.....	Utah Frosh at Salt Lake
Mar. 1 (Fri.)*	.....	Carbon College at Price

BYU Frosh will wear white at home and dark away.

\*8 p.m. games — all others 6 p.m.