

BYU

FOOTBALL 1961



1961 SCHEDULE FOR BYU, OPPONENTS

OPPONENT	Sept. 16	Sept. 23	Sept. 30	Oct. 7	Oct. 14	Oct. 21	Oct. 28	Nov. 4	Nov. 11	Nov. 18	Nov. 25
SAN JOSE STATE	at CALIFORNIA Flores	Pacific at (22) San Jose	Idaho at Moscow	Colorado State at San Jose	Stanford at Palo Alto	Oregon at Eugene	Washington State at Spokane	Arizona State at Tempe	Pacific Stockton	Fresno State Fresno	—
WEST TEXAS STATE	—	DOLBY Galveston	Texas West El Paso	Wichita Canyon	Arizona State at Canyon	Hardin- Simmons at Canyon	Arizona at Canyon	Bowling Green at Ohio	Trinity at San Antonio	New Mexico State at Univ. Park	Texas Tech (2) at Lubbock
NORTH TEXAS STATE	—	Hardin- Simmons at Arlington	CALIFORNIA at Mission	New Mexico State at Denton	Wichita Canyon Denton	Tulsa at Denton	Cincinnati Cincinnati	Drake Denton	Memphis at Memphis	Louisville at Denton	Texas West- El Paso
MONTANA	Wyoming at Missoula	Utah State at Logan	New Mexico at Missoula	CALIFORNIA at Flores	—	Utah at Missoula	Colorado State at Missoula	—	Montana State at Bozeman	Idaho State at Boise	—
UTAH	Colorado State at Salt Lake	Wisconsin at Madison	Oregon at Salt Lake	Arizona State at Tempe	CALIFORNIA at Flores	Montana at Missoula	Wyoming at Salt Lake	New Mexico at Albuquerque	Colorado at Boulder	Utah State at Salt Lake	—
WYOMING	Montana at Missoula	No. Carolina State at Laramie	Kansas at Lawrence	Utah State at Laramie	CALIFORNIA at Flores	Utah at Salt Lake	Arizona at Tucson	New Mexico at Albuquerque	—	—	—
UTAH STATE	Texas West- Logan	Montana at Logan	Washington State at Spokane	Wyoming Laramie	New Mexico at Logan	Colorado State at Ft. Collins	Idaho at Salt Lake	CALIFORNIA at Flores	—	Utah at Salt Lake	—
COLORADO STATE	Utah at Salt Lake	Arizona at Tucson	Arizona State at Ft. Collins	San Jose State at San Jose	Wyoming Laramie	Utah State at Ft. Collins	Montana at Missoula	Air Force at Denver	CALIFORNIA at Flores	New Mexico at Ft. Collins	—
OREGON STATE	—	Syracuse at Portland	Stanford at Corvallis	Idaho at Corvallis	Wisconsin at Madison	Arizona State at Tempe	—	Washington State at Corvallis	—	Washington State at Seattle	CALIFORNIA at Flores
NEW MEXICO	—	New Mexico State at Albuquerque	Montana at Missoula	Texas West- at Albuquerque	Utah State at Logan	Arizona at Tucson	Air Force at Albuquerque	Utah at Albuquerque	Wyoming at Albuquerque	Colorado State at Ft. Collins	CALIFORNIA at Flores

MEMO TO PRESS

PRESS PASSES — Requests for working passes should be made directly to Sports Publicity Office a week prior to the game. Women are not allowed in the press box, and the area is reserved for those actually covering the game. Drivers, and others who may accompany those covering the game will be asked to sit elsewhere. Comp seats will be made available, if the requests are made in advance.

PRESS BOX — The new BYU press box, which is located at the top of the east stands, is just inside the main entrance to the stadium. A parking area just north of the main gates is reserved for working press, and passes will be supplied by request.

BROADCASTING BOOTHS — Four radio booths are available, including one reserved for the visiting station which is designated the official station by the visiting team.

SERVICES — Complete game statistics—lineups, play-by-play, scoring and yardage reports—will be supplied at the end of the game.

UNIFORMS — The Cougars will wear royal blue uniforms at home and white uniforms on the road.

THE SCHOOL

LOCATION: Provo, Utah (Population 35,000)

FOUNDED: October 16, 1875 by Church of Jesus Christ of Latter-day Saints (Mormon)

PRESIDENT: Dr. Ernest L. Wilkinson, University is Governed by Board of Trustees.

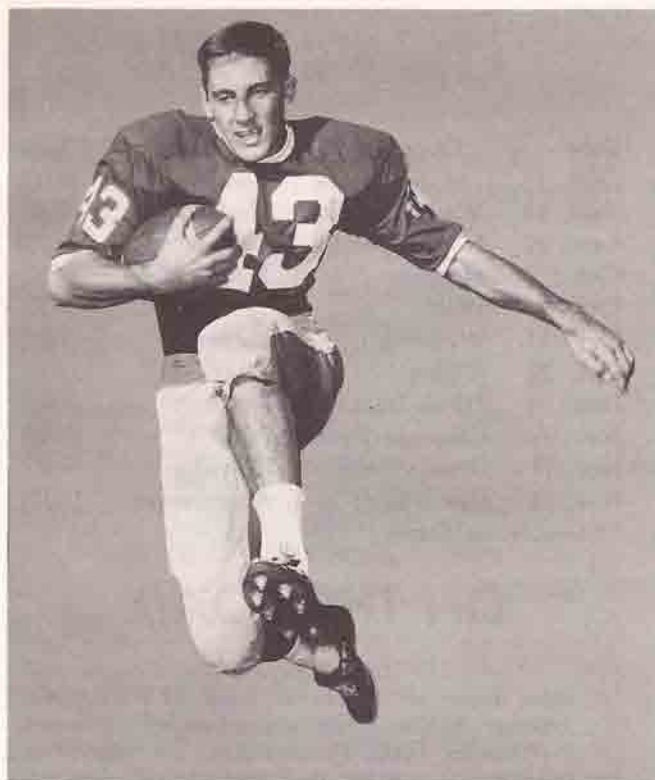
ENROLLMENT: Approximately 11,000

CONFERENCE: Mountain States Athletic Conference (Skyline), Paul Brechler, Commissioner, Office in Suite 230, Hilton, Hotel 1515 Cleveland Place, Denver 2, Colorado

COLORS: Royal Blue and White

NICKNAME: Cougars

CAMPUS EXCHANGE: Provo Number: FRanklin 4-1211; Edwin R. Kimball, Director of Athletics, Ext. 2786 (Fieldhouse); Hal Mitchell, Head Football Coach Ext. 2918 (Fieldhouse) Dave Schultness, Sports Publicity Director, Ext. 2512 (Smoot Administration); Floyd R. Taylor, Ticket Manager, Ext. 2636 (Fieldhouse).



Bill Wright, junior tailback, is one of 20 lettermen returning. Wright, a semi-regular in '60, will play the tailback spot.

CONTENTS

1961 Schedule, Itinerary	2
1960 Results	3
Coaching Staff	4-7
The Offense	8
The Outlook	9
Lettermen, Evaluation	10-11
About BYU	12-15
1961 Rosters	16-17
Opponents	18-22
Records	23-30
News Outlets	31
Athlete's Creed	32
Basketball Schedules	33

1961 SCHEDULE

Date	Opponent	Site	Time
Sept. 16	San Jose State	Provo	(8:00)
Sept. 23	West Texas St.	Canyon	(8:00)
Sept. 30	North Texas St.	Denton	(7:30)
Oct. 7	Montana	Provo	(8:00)
Oct. 14	Utah	Salt Lake City	(2:30)
Oct. 21	Wyoming	Laramie	(1:30)
Oct. 28	(Open)		
Nov. 4	*Utah State	Provo	(1:30)
Nov. 11	Colorado State	Provo	(1:30)
Nov. 18	Oregon State	Corvallis	(1:30)
Nov. 25	New Mexico	Albuquerque	(1:30)

*Homecoming Game

ON THE ROAD

WEST TEXAS STATE at Canyon—The Cougars will leave Provo at 11 a.m. on Sept. 22 (Friday) via Frontier Airlines. They are scheduled to arrive in Amarillo, Texas, about 3 p.m. The return trip to Provo is set for the morning following the game. The team will stay at Hotel Herring in Amarillo.

NORTH TEXAS STATE at Denton—Departure from Provo is scheduled for Sept. 29 (Friday) 10 a.m. via a chartered Frontier Airlines flight. Arrival at Fort Worth will be approximately 3 p.m. The team will stay at the Hilton Hotel in Fort Worth, leaving on the return trip at about 11 a.m. Arrival in Provo will be about 3:30 p.m.

UTAH at Salt Lake City—BYU will remain in Provo until the day of the game. The team will travel to and from Salt Lake City by chartered bus.

WYOMING at Laramie—Itinerary for Wyoming trip is still uncertain, but the team will stay at Connor Hotel in Laramie.

OREGON STATE at Corvallis—BYU will fly to Oregon, but line to be used is still uncertain. The team will stay at Benton Hotel in Corvallis.

NEW MEXICO at Albuquerque—Charter flight from Frontier Airlines will leave Nov. 24 (Friday) at 12 p.m., arriving in Albuquerque at about 3 p.m. Headquarters for the travel party will be Cole Hotel, Albuquerque. Return flight to Provo will leave at 7 p.m., arriving at about 10 p.m. Saturday night.

1960 RESULTS

Date	Opponent	Site	BYU	Opp.
Sept. 16	California Poly at Provo		34	14
Sept. 23	San Jose State at San Jose		8	21
Oct. 1	Colorado State at Fort Collins		7	8
Oct. 7	Utah at Salt Lake City		0	17
Oct. 15	Arizona State at Provo		0	31
Oct. 22	Montana at Missoula		7	6
Oct. 29	Utah State at Logan		0	34
Nov. 5	New Mexico at Provo		15	27
Nov. 12	Denver at Denver		19	6
Nov. 19	Wyoming at Provo		6	30
Nov. 25	Hawaii at Honolulu		6	13

Season Record: 3-8, Conference Record: 2-5
(Tie for 5th)

STANDINGS

	Conference				All Games			
	W	L	T	Pct.	W	L	T	Pct.
Utah State	6	1	0	.857	9	1	0	.900
Wyoming	6	1	0	.857	8	2	0	.800
Utah	5	1	0	.833	7	3	0	.700
New Mexico	4	2	0	.667	5	5	0	.500
Montana	2	5	0	.286	5	5	0	.500
Brigham Young	2	5	0	.286	3	8	0	.273
Denver	1	6	0	.143	3	7	0	.300
C.S.U.	1	6	0	.143	2	8	0	.200

FROSH RESULTS

Date	Opponent	Site	BYU	Opp.
Oct. 21	Utah State at Logan		20	6
Oct. 28	Utah at Provo		14	7
Nov. 4	Montana at Provo		22	8
Nov. 11	Utah at Salt Lake City		22	12

(4-0)

1959 ATTENDANCE

*California Poly	4,426
San Jose State	12,000
Colorado State University	8,000
*University of Utah	21,079
*Arizona State University	8,890
Montana State University	6,000
Utah State University	10,183
*University of New Mexico	4,016
University of Denver	9,000
*University of Wyoming	6,313
University of Hawaii	8,000
TOTAL:	97,907

*Home Games

COACHING STAFF

HAL D. MITCHELL (UCLA '53)

Hal Dwane Mitchell, freshman coach during the 1959-60 season, has been elevated to the post of head football coach for the Cougars, replacing Tally Stevens. At age 30 Mitchell becomes the youngest varsity coach in BYU history, but one who seems destined to shape a new football era for Brigham Young University.



A native of Los Angeles, Mitchell has crammed a valuable amount of playing and coaching experience into his football career. He captained his high school, college and service teams as a player, and has reaped his share of success as a coach, too.

After graduation from high school, Mitchell joined the football forces at UCLA, playing regular tackle three years under the late Red Sanders. Hal captained the Bruin squad in 1951 and was chosen first string tackle on the All-PCC selections.

As an all-star he participated in East-West Shrine game, the Hula Bowl, and the College All-Star game in Chicago. He was tutored under such coaches as Bud Wilkinson of Oklahoma, Bobby Dodd of Georgia Tech, Frank Broyles of Arkansas, and Jim Lee Howell of the New York Giants.

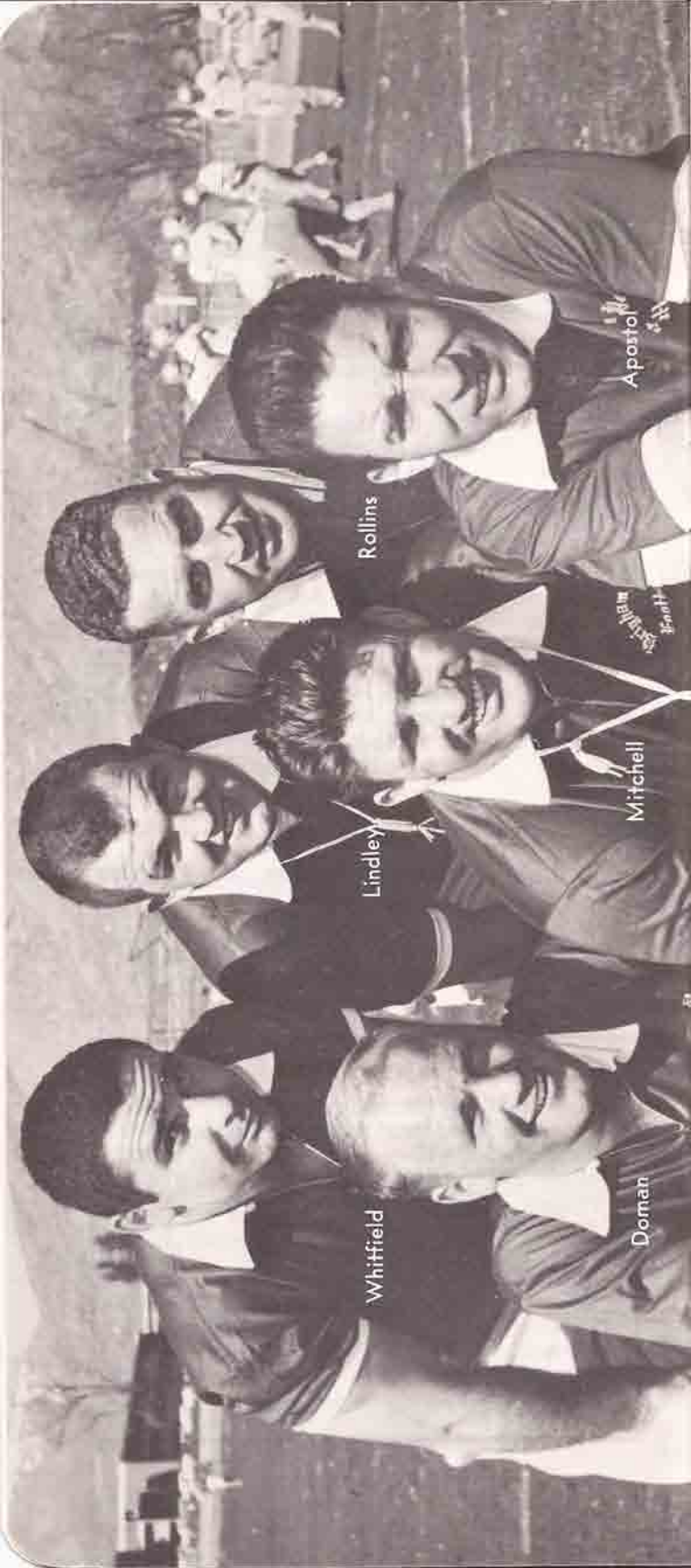
Drafted by the Giants, Mitchell spent the better part of two seasons as a regular tackle. Howell stated that Mitchell was the most conscientious and dedicated player on the team.

As a commissioned officer in the Army, Hal was assigned to Fort Lee, Virginia. He captained the post team his first year there, then served as player-coach during the second season. In 1954 he was named the most valuable player in Army football.

Coach Mitchell began his coaching career at Mira Costa High School in Southern California, where he was line coach. He was named head coach at Hart High School in Newhall, and his team at Hart had an 11-1 record.

Hal came to BYU in 1959 as freshman coach. In two seasons his teams ran up a 7-1 record, including an undefeated season in 1960.

He is married to the former Patricia Ann Armstrong, also a native of Los Angeles, and they have five children; three boys and two girls.



COACHES

CHRIS APOSTOL (Utah State '50)

Chris Apostol came to BYU in 1959 as an assistant coach to Tally Stevens. He was formerly head coach at Ogden High School, where his team won 11 straight victories in taking the Utah Class "A" football championship in 1958.

A native of Bingham, Utah, Chris was an all-around athlete and studentbody president at Bingham before enrolling at Utah State in 1946. He was a member of the Aggie varsity line for three years, then joined the Ogden H.S. staff in 1950. He was named head coach in 1953. His prep record was 44 wins, 13 losses, two ties.

CARL ROLLINS (Wyoming '49)

Another assistant coach familiar with the single wing is Carl Rollins, who also joined the staff in 1959. Rollins came to BYU from Sheridan High School in Wyoming, where his teams won several football and basketball state championships.

Born in Lyman, Wyoming, Carl attended the University of Wyoming, where he captained the Cowboys' first championship football team in 1949. He obtained his M.A. degree in educational administration at Wyoming in 1950.

Rollins advanced from private to captain during service with the Army in World War II, and he is credited with organizing Wyoming's Coaches' Association.

EARL LINDLEY (Utah State '54)

Earl came to BYU last spring from Idaho Falls High School in Idaho, where he served as head football coach. A native of Wellsville, Utah, he was an all-state end at South Cache H. S. before enrolling at Utah State.

He proved to be one of the Aggie football greats, winning honors as end and halfback before graduating in 1954. He received his master's degree from USU in 1957.

Lindley joined the Edmonton Eskimos in the Canadian League, playing three years as regular with that team before leaving the game because of an injury.

GERALD DOMAN (Oregon State '59)

Youngest man on the staff, and the only single member, 23-year old Gerald Doman joined the Cou-

COACHES

gars last spring. He came to Provo from Oregon State, where he was a freshman football coach.

A native of Ontario, Oregon, he was an all-state end in high school. Enrolling at OSC, he was fullback and outside linebacker as a sophomore, moved to end his junior and senior years. He was captain of the team in 1959.

CLINT WHITFIELD (UCLA '59)

Newest addition to the athletic staff is Clint Whitfield, who will serve as BYU wrestling coach and will also assist with football.

A native of Loma Linda, California, Clint attended Los Angeles H. S. and was the first string guard at UCLA for three seasons under Red Sanders. Clint won All-PCC honors in football, represented UCLA as heavy-weight wrestler, and captained the Bruin grapplers in 1958.

He is working toward a master's degree. He coached at Oxford H. S. in California prior to his appointment to BYU.

GLEN TUCKETT (Utah '53)

Coaching the freshman football team this fall is Glen Tuckett, a relatively new member of the staff who came to BYU two years ago. Glen is the Y's successful baseball coach, but doubles in football in the fall.

A graduate of the University of Utah and veteran professional baseball player, Tuckett played with the Salt Lake Bees and teams in the Western International League.

He coached six years at West High School in Salt Lake City prior to coming to BYU. He is a native of Murray, Utah.

ROD KIMBALL, TRAINER

Rod Kimball has served all but one of the last 23 years as team trainer. As veteran member of the staff, he dispenses humor, wisdom and other morale-building qualities along with training know-how.

A native of Jordan, Utah, Rod was an outstanding athlete and student leader. He won letters in two sports at Utah State and BYU. He has traveled countless miles with the Cougars since joining the team in 1937.

OFFENSE

When the curtains part on the '61 season this fall, fans will note something old, yet something new, on the stage at BYU. After an absence of 20 years, the single wing, an aged trouper on the football scene, returns to campus.

Thus the Cougars become one of the few major schools in the country using this offense. The Pumas will employ a Tennessee-type offense similar to that used by UCLA and Iowa State.

Although the formation basically will be single wing, it won't be the same offense fans are used to seeing in action; a fact proved in the spring game.

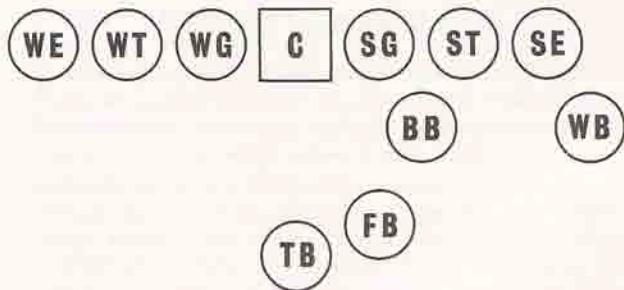
Blocking principles are established so that the team can direct a concentration of blocking power at any defensive area or at any defensive man. The objective is to breach a gap in the defensive line and send blockers into the secondary ahead of the ball carrier or sweep outside the defensive line, but still with blockers preceding the ball carrier.

Says Mitchell: "Rather than hiding the ball, we want the defense to see it, as it does in the belly series. We'll use the ball to move the defense."

Coach Mitchell and his staff believe the balanced line single wing is the most powerful, yet one of the most deceptive and versatile, offenses ever developed in football. It not only features a very strong running and passing attack, but is aligned to exploit the quick-kick to its greatest potential.

Plays unfolding from the new formation include the wingback reverse, the power off-tackle, the fullback spinner, the quick-kick, and the running pass. The staff hopes to have a diversified attack, one with strong spectator appeal.

Though the normal backfield set will favor one side, blocking strength can be quickly diverted back to the opposite side with the snap of the ball.



OUTLOOK

SINGLE WING WITH A PRAYER

The era of the New Frontier finds BYU starting from scratch. BYU will approach the task with a new coaching staff, a new offense, and as a young and inexperienced a team as the Cougars have had in recent years.

Unless new head coach Hal Mitchell his staff and players can serve up a few surprises, the Cougars will find themselves in the familiar position of second division also-ran.

Viewed realistically, there are just too many factors working against BYU this season.

For one thing, the number of returning lettermen—20—is deceiving. Of the score who can claim letterman status, only two were regulars on the 1960 squad. Both of these men were sophomores on a team that ended the season with a 3-8 record.

At last count there were seven seniors on the roster. Only one, or possibly two, figure as starters on the first unit. Coach Mitchell has said that as many as five sophomores are likely to be in the lineup for the start of the coming season.

Fortunately for all concerned, the sophomores and juniors are not strangers to Mitchell. As freshman mentor he guided the juniors to a 3-1 record, the sophomores to a 4-0 record. Certainly this is one factor in his favor.

If, however, this mixture of newness and inexperience happens to age, BYU might make its presence felt in the Skyline race this fall. But this is asking too much.

There are a number of promising candidates in the tailback spot. Heading the list is Eldon Fortie, a 158-pound speedster who could be one of the league's best all-around backs this season. Fortie could be the key back in the new offense. Behind Fortie are such anxious candidates as sophomore Doran Merkley, a sophomore powerhouse; Bill Wright, a veteran halfback last season; and two more untried sophomores.

Bruce Samples, who led the nation in kickoff returns last fall, will be a strong candidate at wingback along with senior Paul Allen. The fullback spot could be helped by mission-returnee Gary Beckstead, and Dick Darling seems to have the edge at blocking back.

The line could materialize, but remains thin in one or two spots. The center position looks strong enough with veteran Steve Dangerfield, regular Mike Brady and reserve Dan Taylor. The tackles should hold up with the likes of Kent Horne, 265-pounder, and Ron Nielson. Wayland Shepard, Mike Conrad and Bruce Kochevar have all the playing experience at guard. Both Don Peterson and Gene Frantz posted lots of playing time at end last year, but the reserves remain bright green.

LETTERMEN

LETTERMEN NOT RETURNING—16

LEFT END: ***Larry Harrison (second unit), **Leroy Overstreet (regular)

LEFT TACKLES: ***Wes Vorwaller (regular), *Martin Seneca (second unit)

LEFT GUARD: **Howard Homan (reserve)

CENTER: ***Dick Magoffin (regular), Hal Neighbors (reserve)

RIGHT GUARD: *Art Brown (reserve)

RIGHT TACKLE: *Norris Fish (reserve), Merrell Johnson (second unit)

RIGHT END: ***Merlin Smith (regular)

QUARTERBACKS: ***Bud Belnap (regular), *Brent Hancock (reserve)

LEFT HALFBACK: ***Ron Jacobsen (reserve)

RIGHT HALFBACK: ***Jack Gifford (regular)

FULLBACK: *Tom Stolworthy (regular)

TOTAL: Seven regulars, three second stringers, seven reserves.

LETTERMEN RETURNING—20

LEFT END: **Don Peterson (reserve)

LEFT TACKLE: **Ron Nielson (reserve), *Val Weenig (reserve)

LEFT GUARD: *Mike Conrad (regular), **Wayland Sheppard (second unit)

CENTER: **Steve Dangerfield (second unit), *Dan Taylor (reserve)

RIGHT GUARD: *Roger DuPaix (second unit), *Bruce Kochevar (reserve fullback), *Mike Brady (regular)

RIGHT TACKLE: **Kent Horne (regular), Steve Sullivan (reserve)

RIGHT END: *Gene Frantz (second unit)

QUARTERBACK: *Eldon Fortie (second unit)

LEFT HALFBACK: *Bill Wright (regular), *Bruce Samples (second unit), *Dion Frazier (reserve)

RIGHT HALFBACK: **Paul Allen (second unit)

FULLBACK: *Dick Darling (second unit), Gary Beckstead (reserve)

TOTAL: Four regulars, eight second stringers, eight reserves.

EVALUATION

ENDS—WEAKER: Don Peterson and Gene Frantz figure as likely starters because of experience. Thereafter, the chores will fall to half a dozen sophomores. Could be hurting here before the season is over, unless newcomers like Jim Kimmel and Dave Cass come through.

TACKLES—Weaker: Another case of green material supporting a good pair of regulars. Kent Horne, a two-year letterman, isn't likely to yield on strong side, and Ron Nielson might anchor the other slot. Steve Sullivan will back up Horne, all others are shy playing time.

GUARDS—WEAKER: Mike Conrad, Wayland Sheppard and Bruce Kochevar are the most experienced of the lot. Roger DuPaix, who had some great moments as a soph last fall, missed spring practice because of an injury. Conrad was regular guard last fall, will be hard to beat out.

CENTERS—ABOUT THE SAME: Here's one position that should hold well. Although Dick Magoffin graduated, senior Steve Dangerfield and juniors Mike Brady and Dan Taylor can fill the gap adequately. Brady moves back to center from first-string guard position.

WINGBACKS—ABOUT THE SAME: Actually, this spot remains a question mark. Bruce Samples, who saw quite a bit of action as a soph, missed spring practice because of baseball. Paul Allen, a senior, could help, as might Dion Frazier. Rick Ashmore is the only sophomore in the group.

BLOCKING BACKS—WEAKER: Although out with injuries much of the season, Dick Darling is the only returning letterman here. Darling can also play defense. All others vying for this spot are sophomores. Lack of experience here could prove costly.

FULLBACKS—WEAKER: Three sophomores and two returned missionaries are the candidates here. Gary Beckstead, who lettered before his mission call, will be back, and Tillman Turley may return to form in time to help. The sophomores are Bill Jackson, John Malarsie, and Bill Nelson.

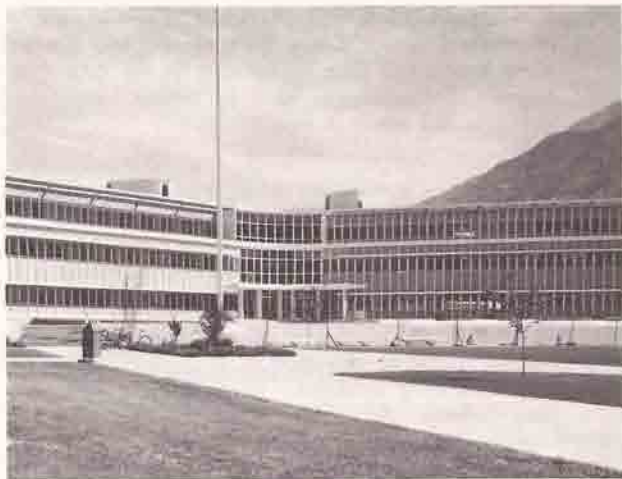
TAILBACKS—ABOUT THE SAME: This key position will be manned by Eldon Fortie, a slender junior who proved himself in the spring game. Bill Wright, a regular back last season, will be pushing Fortie. Passing game not too strong. Sophomore Doran Merkley is strong runner, Bill Jackson could help with aerial game.

FACTS ABOUT BYU. . .

(Information on the following pages is designed to give a general picture of the University and the area in which it is located.)

LOCATION

Brigham Young University, which is located on 500 acres in the northeast section of Provo, is in the heart of Utah Valley. Provo is the third largest city in Utah. When joined with Orem (the city to the immediate north), it is classified by the federal government as a "standard metropolitan statistical area." That is, it has a twin city population of at least 50,000. Latest figures released by the government list the population of Provo-Orem area as 106,777 persons, more than half of whom reside within the central cities. Utah Valley is bordered on the west by Utah Lake, on the north by 14,000-foot Mt. Timpanogos, and the east by the Wasatch Mountain Range. Population within the Valley is over 115,000.



TRAVEL

Provo is 45 miles south of Salt Lake City, the state capitol, which has a population of 250,000. When new freeways now under construction are completed, the commuting time between Provo and Salt Lake City will be cut to about 50 minutes. Ogden, the second largest city in Utah, is 35 miles north of Salt Lake City. In road miles Provo is 680 miles from Corvallis; 560 miles from Albuquerque; 760 from Tucson; 630 from Tempe; 465 from Denver; 700 from San Francisco and Los Angeles; and 400 from Boise (all approximate figures). Three air lines service the proximity of Provo, plus two bus lines and two railroads.

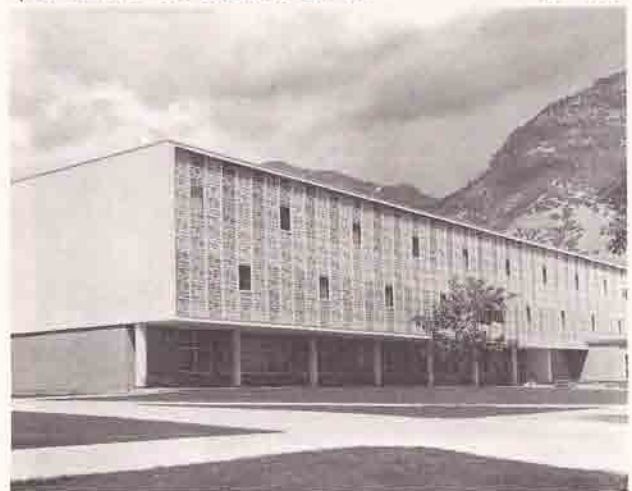
ITS LOCATION

FACULTY

BYU is staffed with over 500 faculty members who have obtained degrees from universities located in 35 states and seven foreign countries. More than 45 per cent possess doctoral degrees, one per cent have law degrees, and 40 percent have master's credentials.

ENROLLMENT

Total daytime enrollment for 1959-60 was 11,842; this is more than double the enrollment of ten years ago. Expected enrollment should reach 15,000 by 1965, and 22,000 by 1970. Fifty-five per cent of the students come from outside Utah, including the 50 states and 45 foreign countries. Membership in the Church of Jesus Christ of Latter-day Saints is not required for admission, although at least 95 per cent of the students are members of the church.



per cent, as a condition of their continuance as students, are required to abide by the same standards of morality and integrity.

TUITION

Yearly tuition and fees total \$260 for both in-state and out-of-state students. Room and board costs \$580 per year, and the total cost (estimated) for the school year is \$1,000, which includes moderate personal expenses.

CAMPUS

The campus major is located on a hill overlooking Provo and Utah Valley. There are 96 academic and housing buildings completed or under construction. BYU also has a 600-acre farm and a summer campus in Provo Canyon.

... AND COMMUNITY

INDUSTRY

A combination of agriculture and industry support the Valley's economy. The county ranks first in the state in production of apples, pears, plums, prunes, strawberries, cherries, apricots and other crops. Utah County also leads in Grade A milk production. The largest industry in the county, however, is U.S. Steel's Columbia-Geneva Steel Division, which is located on a 1502-acre site near Utah Lake. Geneva employs an estimated 5,000 workers in the Valley.

FOUNDING

BYU was founded by Brigham Young as an academy in October 16, 1875 under the leadership of Karl G. Maeser. In 1903 the school became a university. It is owned and operated by the Church of Jesus Christ of Latter-day Saints (commonly called Mormon). It is the headquarters of the Church's widespread educational system.



CURRICULUM

Today BYU is the largest church related university in the nation. A liberal arts, vocational and scientific curriculum is offered by 11 colleges and the graduate school. They are: College of Biological and Agricultural Sciences, College of Business, College of Education, College of Family Living, College of Fine Arts, General College, College of Humanities and Social Sciences, College of Nursing, College of Physical and Engineering Sciences, College of Physical Education, College of Religious Instruction, and the Graduate School. An Air Force ROTC Detachment is also functioning on campus. Doctoral programs are available in 11 departments, and an Honors Program commenced last year. BYU uses the semester system.

... AND FACILITIES

ATHLETICS

BYU's Department of Athletics is a part of the College of Physical Education under Dean Milton F. Hartvigsen. With the exception of swimming, teams are represented in every sport. The school's intramural program offers basketball, football, badminton, golf, handball, horseshoes, softball, table tennis, tennis, volleyball, wrestling, swimming, skiing and track. The intramural program is financed by student fees.



FACILITIES

Hub of most athletic activity on campus is the George Albert Smith fieldhouse and its 28,950 square-foot extension. The original building houses a main floor (seating capacity 10,800), two large auxiliary gyms, wrestling room, boxing room, therapy room, weight lifting area, steam room, squash courts, handball courts, four classrooms plus numerous offices for coaches and faculty, and the usual shower and locker rooms. The extension, which was opened in January of last year, provides a huge indoor area and an extension of an indoor track. The indoor track offers a 120-yard straightaway, and several meets were held indoors this spring. The area is also used by physical education groups. BYU's track in the stadium is one of the best in the entire West, and facilities for field events, too, are modern and well preserved.

A modern baseball diamond, which was inaugurated four years ago, is located just north of the football stadium. In addition to the above facilities, the general athletic area includes 24 tennis courts, 8 softball diamonds, an outdoor basketball area, a pitch and putt course for golf, large football areas for practice and playing, horseshoe pits, and hard-top games area.

1961 FOOTBALL ROSTER

No.	Name	Position
10	Rick Ashmore	WB
11	Dion Frazier	WB
12	Paul Allen	WB
14	Bruce Samples	WB
17	Jack Kemp	WB
20	Gordon Blackham	BB
21	Glenn Pond	BB
26	Dick Darling	BB
28	Lawrence Geisler	BB
30	Bill Francis	FB
31	Gary Beckstead	FB
33	Bill Nelson	FB
34	John Malarsie	FB
36	Tillman Turley	FB
40	Eldon Fortie	TB
41	Bill Wright	TB
43	Bill Jackson	TB
44	Doran Merkley	TB
51	Dan Taylor	C
54	Mike Brady	C
59	Steve Dangerfield	C
60	Bryon Lake	SG
61	Wayland Sheppard	WG
62	Bruce Kochevar	SG
63	Mike Conrad	WG
64	Bruce Handley	SG
65	Bob Barrow	WG
67	Roger DuPaix	SG
69	Layne Hynek	WK
70	Max Hatfield	ST
71	Val Weenig	WT
72	Paul Knoblauch	ST
73	Ron Nielson	WT
74	Kent Horne	ST
75	Scott Wartena	WT
76	Devon Stone	ST
77	George Burrows	WT
78	Steve Sullivan	ST
80	Jim Kimmel	SE
81	Gene Frantz	WE
82	Dave Cass	SE
83	Lloyd Smith	WE
84	Dick Wood	SE
85	Jim Hawkins	WE
87	Clark Stringham	WE
89	Don Peterson	WE
90	Frank Baker	—

WINGBACKS:

No.	Player	Wt.	Ht.	Age	Year	Letters	Home Town
10	Rick Ashmore	180	6-0	19	Soph.	Fr.	Newhall, California
11	Dion Frazier	185	5-10	21	Junior	1	Carlin, Nevada
12	Paul Allen	183	6-0	20	Senior	2	Pleasant Grove, Utah
14	Bruce Samples	176	5-8	19	Junior	1	Ogden, Utah

BLOCKING BACKS:

20	Gordon Blackham	190	5-11	19	Soph.	Fr.	Salt Lake City, Utah
21	Glenn Pond	215	6-1	18	Soph.	Fr.	Murray, Utah
26	Dick Darling	198	5-11	19	Junior	1	Boise, Idaho
28	Larry Geisler	170	5-10	18	Soph.	Fr.	Salt Lake City, Utah

FULLBACKS:

30	Bill Francis	170	5-11	18	Soph.	Fr.	Boise, Idaho
31	Gary Beckstead	190	6-0	22	Junior	1	Ely, Nevada
33	Bill Nelson	168	5-10	19	Soph.	Fr.	Concord, California
34	John Malarsie	174	5-11	19	Soph.	Fr.	Durango, Colorado
36	Tillman Turley	201	6-1	23	Junior	0	Eagar, Arizona

TAILBACKS:

40	Eldon Fortie	158	5-11	19	Junior	1	Salt Lake City, Utah
41	Bill Wright	184	6-0	20	Junior	1	Salt Lake City, Utah
43	Bill Jackson	176	6-0	18	Soph.	Fr.	Ogden, Utah
44	Doran Merkley	195	6-2	18	Soph.	Fr.	Blackfoot, Idaho

CENTERS:

51	Dan Taylor	187	6-2	19	Junior	1	Springville, Utah
54	Mike Brady	175	5-11	19	Junior	1	Oak Ridge, Tennessee
59	Steve Dangerfield	189	6-0	20	Senior	2	Salt Lake City, Utah

WEAKSIDE GUARDS:

61	Wayland Sheppard	193	6-0	22	Senior	2	Sacramento, California
63	Mike Conrad	205	5-7	20	Junior	1	Manhattan Beach, Calif.
65	Bob Barrow	175	5-8	18	Soph.	Fr.	Hawthorne, California
69	Layne Hynek	185	6-0	18	Soph.	Fr.	Houston, Texas

STRONGSIDE GUARDS:

60	Bryon Lake	200	6-0	18	Soph.	Fr.	West Linn, Oregon
62	Bruce Kochevar	183	6-0	20	Senior	1	Los Angeles, California
64	Bruce Handley	194	6-0	18	Soph.	Fr.	Ogden, Utah
67	Roger DuPaix	178	5-11	19	Junior	1	Huntington Park, Calif.

WEAKSIDE TACKLES:

71	Val Weenig	203	6-2	19	Junior	1	Ogden, Utah
73	Ron Nielson	218	6-2	22	Senior	2	Tooele, Utah
75	Scott Wartena	212	6-1	18	Soph.	Fr.	Portland, Oregon
77	George Burrows	258	6-4	23	Soph.	Tr.	San Leandro, Calif.

STRONGSIDE TACKLES:

70	Max Hatfield	202	6-1	18	Soph.	Fr.	Buhl, Idaho
72	Paul Knoblauch	195	6-0	18	Soph.	Fr.	Hawthorne, California
74	Kent Horne	258	6-2	22	Senior	2	Glendale, Arizona
76	Devon Stone	200	5-9	18	Soph.	Fr.	Ogden, Utah
78	Steve Sullivan	192	6-1	21	Senior	2	Henderson, Nevada

WEAKSIDE ENDS:

81	Gene Frantz	190	6-3	20	Junior	1	Salt Lake City, Utah
83	Lloyd Smith	178	5-11	18	Soph.	Fr.	Knoxville, Tennessee
85	Jim Hawkins	201	6-1	18	Soph.	Fr.	Richland, Washington
87	Clark Stringham	194	6-2	22	Junior	0	Riverside, California
89	Don Peterson	205	6-4	21	Senior	2	Burley, Idaho

STRONGSIDE ENDS:

80	Jim Kimmel	175	6-0	18	Soph.	Fr.	Sacramento, California
82	Dave Cass	182	6-2	18	Soph.	Fr.	Newhall, California
84	Dick Wood	183	6-0	19	Soph.	Fr.	Bountiful, Utah

OPPONENTS

No. 1 -- SAN JOSE STATE

Sept. 16 — 8 p.m. at Provo

Location San Jose California (202,000)
Enrollment Approximately 15,000
Nickname Spartans
Colors Gold and White
Conference Independent in football
Stadium Spartan (18,155)
System Wing-T
Head Coach Bob Titchenal (San Jose State '41)
President Dr. John T. Wahlquist
Athletic Director Walt McPherson
Athletic Publicist Art Johnson (CY 4-6414,
Ext. 2317)

OUTLOOK—Big, strong, experienced line, solid backfield should give Spartans another winning season. Titchenal optimistic. Fullback Johnny Johnson could be best on coast, along with tackle Leon Donohue.

SERIES HISTORY—Sadly unbalanced with the Spartans holding a 7-0 lead in the series. First game was in 1946, with only close decision, 28-25; in 1953. San Jose bombed the Cougars, 21-8, last year in California.

No. 2 -- WEST TEXAS STATE

Sept. 23 — 7:30 p.m. at Canyon

Location Canyon, Texas (5,000)
Enrollment Approximately 3,800
Nickname Buffaloes
Colors Maroon and White
Conference Border Conference
Stadium Buffalo Bowl (20,000)
System Pro-type Split-T
Head Coach Joe Kerbel (Oklahoma '47)
Athletic Publicist Ray Franks (OLive 5-2161,
Ext. 221)

OUTLOOK—A football revival at Canyon will produce a general improvement in '61. Jaycee transfers will fill holes left by eight departed lettermen. Lack of experience, thin interior line are problems. Backs to watch are Dan Anderson, Ollie Ross, and quarterback Jim Dawson. Outstanding linemen are Jerry Behrens at tackle, Frank Thrasher at center.

SERIES HISTORY—The game at Canyon will be the first between the football teams of both schools.

OPPONENTS

No. 3 -- NO. TEXAS STATE

Sept. 30 — 8 p.m. at Denton

Location Denton, Texas (30,000) Near Dallas
Enrollment 7,494 in fall of 1960
Nickname Eagles
Colors Green and White
Conference Missouri Valley
Stadium Fouts Field (20,000)
System T-Formation
Head Coach Odus Mitchell (West Texas State '24)
President J. C. Mathews
Athletic Publicist Fred Graham (382-8277, Ext. 220)

OUTLOOK—Only 2-6-1 in '60 campaign, the Eagles also look for better record this fall. Seventeen lettermen returning, also six transfers. Eagles best from tackle to tackle. Watch Arthur Perkins, all-Missouri Valley fullback, guard Billy Weaver.

SERIES HISTORY—Only the second game between Cougars and Eagles. North Texas won first contest, 12-6, in 1958 at Provo. Abner Haynes was star in that one.

No. 4 -- MONTANA

Oct. 7 — 8 p.m. at Provo

Location Missoula, Montana
Enrollment Approximately 4,000
Nickname Grizzlies, Silvertips
Colors Copper, Silver and Gold
Conference Mountain States (Skyline)
Stadium Dornblaser Field (10,000)
System Multiple (emphasis on single wing)
Head Coach Ray Jenkins (Colorado '42)
President Dr. Harry K. Newburn
Athletic Publicist John Bennitt (LI 3-7241, Ext. 408)

OUTLOOK—With last year's backfield returning, MSU could be numbered among the stronger Skyline also-rans. They may feel the first pinch of de-emphasis this fall, but they still have a talented group headed by Bob O'Billovich, Pat Dodson, Terry Dillon, Gary Smith.

SERIES HISTORY—A one-point victory, 7-6, at Missoula last year gives the Cougars a 9-5-0 series edge. The year before found the Grizzlies winning 12-0 decision at Provo. MSU teams seem to play well in Provo.

OPPONENTS

No. 5 -- UTAH

Oct. 14 — 2:30 p.m. at Salt Lake City

Location	Salt Lake City (250,000)
Enrollment	Approximately 10,000
Nickname	Utes; Redskins
Colors	Cardinal and White
Conference	Mountain States (Skyline)
Stadium	University Stadium (30,000)
System	Multiple-T
Head Coach	Ray Nagel (UCLA '50)
President	Dr. A. Ray Olpin
Athletic Director	James R. "Bud" Jack
Athletic Publicist	Harry James (EM 4-4545)

OUTLOOK—One of the Skyline favorites, Utah has 24 lettermen returning, including key personnel who kept the machine going last year. Ed Pine, an outstanding center, will anchor the mighty line. Gordy Lee and Jerry Overton are the halfbacks to watch.

SERIES HISTORY—The Redskins reached the "30" mark last fall with 17-0 blanking of Cougars at BYU home game in Salt Lake City. Utes now have a strangle hold on series record which stands 30-2-4 in their favor; one of the most lopsided series in college history.

No. 6 -- WYOMING

Oct. 21 — 1:30 p.m. at Laramie

Location	Laramie, Wyoming
Enrollment	Approximately 4,000
Nickname	Cowboys
Colors	Brown and Yellow
Conference	Mountain States (Skyline)
Stadium	War Memorial (18,000)
System	Multiple Offense
Head Coach	Robert Devaney (Alma '39)
President	Dr. George Duke Humphrey
Athletic Director	Glenn J. Jacoby
Athletic Publicist	Bill Young

OUTLOOK—This is first year Cowboys have to strain for talent, but they still have enough to rank among favorites for Skyline championship. Chuck Lamson and fullback Bob Bisacre are listed among standout backs.

SERIES HISTORY—BYU hasn't been able to beat a Wyoming team since 1948. Last year's 30-6 victory for the Cowboys pushed the series record to 15-13-3, favor of Wyoming. Cougars held the edge until two years ago, now they are falling behind.

OPPONENTS

No. 7 -- UTAH STATE

Nov. 4 — 1:30 p.m. at Provo

Location	Logan, Utah (18,000)
Enrollment	Approximately 5,500
Nickname	Aggies
Colors	Navy Blue and White
Conference	Mountain States (Skyline)
Stadium	Romney Stadium (15,000 capacity)
System	Variable-T
Head Coach	John Ralston (California '51)
President	Dr. Daryl Chase
Athletic Director	H. B. Hunsaker
Athletic Publicist	Karl W. Klages (SKYline 2-4100, Ext. 261)

OUTLOOK—Co-champions with Wyoming last year, the Aggies figure as everybody's choice to repeat this fall. They are as strong or stronger in many positions with linemen like AA Merlin Olsen, Clark Miller, Willie Redmond, and halfback Tom Larscheid. This is the Ags' year to romp.

SERIES HISTORY—Utah State avenged 0-18 blanking in Provo two years ago by trouncing Cougars 34-0 last year in Logan. USU now holds series lead with 20-13-3 record. Series started in 1922, and game trophy is the Old Wagon Wheel.

No. 8 -- COLORADO STATE

Nov. 11 — 1:30 p.m. at Provo

Location	Fort Collins, Colorado
Enrollment	Approximately 6,100
Nickname	Aggies, Rams
Colors	Green and Gold
Conference	Mountain States (Skyline)
Stadium	Colorado Field (14,000)
System	T-Formation
Head Coach	Don "Tuffy" Mullison (CSU '49)
President	Dr. William E. Morgan
Athletic Director	Robert L. Davis
Athletic Publicist	Dick Smelser (HUNter 2-3300, Ext. 433)

OUTLOOK—"Reasonably sound and improved," according to Coach Mullison. Ags expect to bounce back after 2-8 record last fall. Not much size, but good overall speed and agility. Quarterback slot is uncertain. Guard Nick Kohls is standout in the line.

SERIES HISTORY—A heartbreaking loss, 7-8, at Fort Collins last fall upped CSU's margin, 17-7-2, in a series dating back to 1922. BYU upset the Rams the year before, 14-13 at Provo. Last three games have been upsets.

OPPONENTS

No. 9 -- OREGON STATE

Nov. 18 — 1:30 p.m. at Corvallis

Location Corvallis, Oregon (22,000)
 Enrollment Approximately 8,500
 Nickname Beavers
 Colors Orange and Black
 Conference Independent
 Stadium Parker Stadium (28,000)
 System Multiple
 Head Coach Tommy Prothro (Duke)
 President Dr. James Jensen
 Athletic Director R. S. "Spec" Keene
 Athletic Publicist John Eggers (Plaza 2-4211
 Ext. 430)

OUTLOOK—Total of 26 returning lettermen, including large group of seniors. Good depth in line, plus a backfield headed by tailback Terry Baker, an AA candidate. Addition of T-formation to repertoire is expected to sharpen Beaver attack.

SERIES HISTORY—Game at Corvallis will be only the second meeting on the gridiron between the two schools. The Beavers waltzed away with an easy 33-0 win when Coach Prothro made his debut at Oregon State.

No. 10 -- NEW MEXICO

Nov. 25 — 1:30 p.m. at Albuquerque

Location Albuquerque, New Mexico (250,000)
 Enrollment Approximately 7,600
 Nickname Lobos, Wolfpack
 Colors Cherry and Silver
 Conference Mountain States (Skyline)
 Stadium University Stadium (30,000)
 System Wing-T
 Head Coach Bill Weeks (Iowa State '51)
 President Dr. Tom L. Popejoy
 Athletic Director Pete McDavid
 Athletic Publicist George McFadden (247-0391,
 Ext. 329)

OUTLOOK—Twenty returning lettermen, a good crop of sophomores, and junior college transfers make for a brighter picture at NMU. If replacements for key losses are found, the Lobos are expected to move forward. Players to watch are end George Heard, quarterback Jim Cromartie, halfback Bobby Santiago.

SERIES HISTORY—Last year the Lobos' 27-15 win at Provo boosted them ahead in the series, 5-4-1. Series started with a 0-34 BYU loss in 1951, it has been touch and go since then.

RECORDS

SEASON RECORDS—TEAM

Most yards gained, total offense 3,003—1951 (10 games)
 Most yards gained, rushing offense 2,499—1958 (10 games)
 Most yards gained, passing offense 1,286—1956 (10 games)
 128.6 yr. avg.
 Most passes attempted 265—1956 (26.5 average per game)
 Most passes completed 105—1956 (.396 average)
 Most passes had intercepted 24—1956 (265 attempts)
 Best completion percentage421—1957 (156 attempts)
 Most first downs 145—1953
 Best punting average 43.2 yards—1959
 Most punts 63—1956 (2,260 yards)
 Most yards, punt returns 677—1948
 Best average, punt returns 19.5 yards—1948 (23 returns)
 Most yards, kickoff returns 994—1960 (41 returns)
 Best average, kickoff returns 24.2 yards—1960 (41 returns)
 Fewest fumbles lost 9—1957
 *Most opponents' fumbles recovered 32—1957 (of 53)
 Most yards penalized 602—1957
 Fewest yards penalized 204—1953 (10 games)
 Most points scored 215—1951
 Best passing defense 60.5 yards per game—1952
 Most consecutive victories 7—1937-38
 Longest undefeated string 8—1937-38

RECORDS—ONE GAME

Most points scored, any game 67—1951 (Western State 7)
 Most points scored, conference game 54—1937
 (Utah State 0)
 Most points scored, one half 54—1951 (Western State)
 32—1956 (Denver)
 Total offense 580 yards—1951 (Western State)
 505—1958 (Montana)
 Rushing offense 465—1958 (Montana)
 Passing offense 239 yards—1956 (Utah State)
 Passes attempted 43—1956 (New Mexico)
 Passes completed 22—1956 (New Mexico)
 Passes had intercepted, one game 5—1956 (Wyoming)
 Opponents' passes intercepted, one game 6—1951
 (Western State)
 Most first downs 24—1956 (New Mexico)
 First downs rushing 22—1958 (Montana)
 Most punts 13—1956 (Wichita) 368 yards
 Most fumbles recovered 7—1956 (Wichita)
 Best punting percentage 54.3—1959 (Wyoming)
 Most yards penalized 216—1951 (Western State)
 Fewest yards penalized 0—1953 (Utah)
 0—1956 (Fresno State)
 Most yards, kickoff returns 203—1956 (Denver)
 Fewest first downs, one game 4—1956 (Wichita)
 Poorest total offense, one game 47—1956 (Wichita)
 Poorest rushing offense, one game 5—1956 (Wichita)
 Poorest passing offense, one game 0—1957 (New Mexico)
 Best rushing defense, one game 21 yards—1951
 (Western State)
 Best pass defense, one game 2—1959 (New Mexico)

RECORDS

SINGLE GAME RECORDS FOR BOTH TEAMS

Most points scored	92—1956 (Denver 58, BYU 34)
Total offense	842 yards—1952 (Arizona State)
Rushing offense	674 yards—1958 (Fresno State)
Passing offense	404 yards—1951 (Western State)
Poorest rushing offense	235 yards—1950 (Pepperdine)
Poorest passing offense	12 yards—1953 (Utah State 8, BYU 4)
Most passes attempted	65—1957 (Arizona)
Most passes completed	30—1951 (Arizona)
Most passes intercepted	8—1950 (Pepperdine) 8—1951 (Western State)
Most first downs	43—1953 (Utah) BYU 22, Utah 21 41—1952 (Arizona State) AS 21, BYU 20
Most punts	17—1957 (Wyoming)
Most fumbles	17—1955 (Los Angeles State) LAS 10, BYU 7
Most fumbles lost	8—1951 (Wyoming) 8—1954 (Arizona State) 8—1954 (Montana)
Most yards penalized	256 yards—1951 (Western State) BYU 216, WSC 40

INDIVIDUAL RECORDS—SEASON

Most yards, total offense	986—1956 by Carroll Johnston 822—1951 by Ray Oliverson
Most yards, rushing	822—1951 by Ray Oliverson
Most yards, passing	982—1947 by Rex Olsen
Most passes attempted	167—1956 by Carroll Johnston
Most passes completed	79—1947 by Rex Olsen
Most passes had intercepted	15—1956 by Carroll Johnston
Most touchdown passes	8—1956 by Carroll Johnston
Best completion percentage	.500—1947 by Rex Olsen

PASS RECEIVING:

Most receptions	32—1952 by Owen Skousen
Most yardage on reception	439—by Owen Skousen (1952)
Most touchdown receptions	3—by Owen Skousen (1952) 3—by Dewey Brundage (1952)

PUNTING:

Best punting average, season	44.8 yards—Gary Dunn (1959) 44.1 yards—Dalton Overstreet (1954) 42.4 yards—Rex Berry (1950)
Most punts, one season	51—by Lyle Koller (1948) 49—by Carroll Johnston (1957)
Most yards punt returns	252—by Don Bushore (1948) in 11 returns
Best average punt return	22.9 yards by Don Bushmore (1948)
Most points scored	90—by Ray Oliverson (1951)
Most touchdowns scored	15—by Ray Oliverson (1951)
Most points after touchdowns	22—by Bob Karpowitz (1950)
Best PAT percentage	.917—by Bob Karpowitz (1950) 22 out of 24
Most consecutive PAT	14—Bob Karpowitz (1950)
Most yards kickoff returns	603—by Bruce Samples (1960)

RECORDS

GAME RECORDS—INDIVIDUAL

Most yards, total offense	217—Carroll Johnston (1956)
Most yards, rushing	179—Dave Chadwick (1948) Montana
Most yards, passing	223—Carroll Johnston (1956) (Utah State)
Most passes attempted	30—Carroll Johnston (1956) Utah State
Most passes completed	18—Carroll Johnston (1956) New Mexico
Most touchdown passes	3—Carroll Johnston (1956) New Mexico
Most pass receptions	8—Burt Bullock (1956) Utah State
Most yards pass reception	134 by Burt Bullock (1956) Utah State
Best punting average	54.3—Gary Dunn (1959) Wyoming
Longest scoring run from scrimmage	93—Weldon Jackson (1958) Fresno State 79—Dave Chadwick (1948) Montana 79—Weldon Jackson (1958) Utah State
Longest scoring pass play	70 yards—Carroll Johnston to Tom Clark, 1956 (Fresno State)
Longest non-scoring pass play	65 yards—Jim Eccles to Don Benson, 1949 (Pepperdine)
Longest punt	69—Wayne Startin (1958) Wyoming
Longest punt return	81—Hal Lewis (1958) Colo. State
Longest interception return	85 yards—Marcell Chatterton (1946) Denver
Most successive conversions	14—Bob Karpowitz (1950)

CAREER RECORDS—INDIVIDUAL

Most points scored	108—Ray Oliverson (18 TD) 1950-51
Most yards rushing	1,449—Weldon Jackson (56-57-58)
Most yards passing	1,702—Carroll Johnston (55-56-57)
Most passes attempted	329—Carroll Johnston (55-56-57)
Most passes completed	129—Carroll Johnston (55-56-57)
Most passes had intercepted	24—Carroll Johnston (55-56-57)
Most touchdown passes	13—Carroll Johnston (55-56-57)
Most yards total offense	1,818—Carroll Johnston (55-56-57)
Most passes received	60—Owen Skousen (51-52-55)
Most yards pass receptions	896—Owen Skousen (51-52-55)

CONFERENCES RECORDS HELD BY BYU

Lowest average allowed per punt return	2.6—1957
Most opponents' fumbles recovered	32—1957 (Ties National Record)
Most passes attempted	43—vs. New Mexico, 1956 (Game)
Most passes had intercepted	7—vs. Utah, 1958 (Game)
Most yards penalized	216—vs. Western State, 1951 (Game)
Most opponents' fumbles recovered	7—vs. Wichita, 1956 (Game)
Most points scored (both teams)	92—Denver 58, BYU 34 1956

INDIVIDUAL

Best average punt returns	22.9—Don Bushore, 1948 (Season)
Most touchdowns scored	15—(Tie) Ray Oliverson, 1951 (Season)
Best punting average	42.9—Gary Dunn (1958-59) Career

PAST SEASONS

PAST SEASONS

BYU	1922	Opp.	BYU	1923	Opp.
3	Utah State	41	16	Montana State	15
0	University of Utah	49	6	Colorado Aggies	14
0	Colorado Mines	49	0	Colorado U.	41
7	Wyoming	0	0	Utah	15
0	Colorado Aggies	33	19	Western State	0
0	Wyoming	13	0	Utah State	40
			6	Colo. College	31
10	1-5	185	47	2-5	156
BYU	1924	Opp.	BYU	1925	Opp.
3	Colo. College	0	7	Colorado Aggies	21
0	Montana State	13	7	Colorado College	6
6	Utah	35	0	Utah State	14
9	Utah State	13	0	Utah	27
26	Western State	0	39	Western State	6
0	Colorado Mines	0	16	Montana State	7
44	2-3-1	61	69	3-3	81
BYU	1926	Opp.	BYU	1927	Opp.
0	California Aggies	17	0	Colorado Aggies	29
6	Colorado Teachers	12	0	California Aggies	0
0	Utah State	0	7	Colorado State	21
30	Western State	0	0	Utah State	22
0	Montana State	27	60	Western State	7
7	Utah	40	0	Utah	20
6	Colorado Aggies	19	38	Colorado Mines	19
49	1-5-1	115	105	2-4-1	118
BYU	1928	Opp.	BYU	1929	Opp.
9	College of Idaho	6	10	Nevada	7
6	California Aggies	6	0	California Aggies	19
6	Colorado Aggies	15	12	Montana State	13
46	Western State	0	7	Utah State	6
0	Utah State	10	33	Western State	12
7	Montana State	19	13	Utah	45
0	Utah	0	25	Colorado Teach.	13
			40	Wyoming	0
74	2-3-2	56	140	5-3	115
BYU	1930	Opp.	BYU	1931	Opp.
19	Wyoming	12	7	U.A.Y. All-Stars	3
6	Nevada	6	0	U. San Francisco	25
7	Colorado Teach.	7	18	Nevada	14
7	Utah	34	0	Utah	43
25	Western State	0	31	Western State	0
39	Utah State	14	0	Colorado Teach.	6
13	Mount St. Charles	13	6	Utah State	0
19	Montana State	6	7	Wyoming	13
135	4-1-3	92	76	4-4	104
BYU	1932	Opp.	BYU	1933	Opp.
6	Montana State	0	0	U. S. Marines	21
28	Western State	6	25	Montana State	0
46	Occidental College	0	6	Utah	21
0	Utah	29	13	Western State	0
20	Colorado Teachers	2	0	Denver	6
25	Wyoming	0	25	Colorado College	0
32	Idaho State	0	0	Utah State	14
18	Utah State	6	6	Wyoming	3
175	7-1	43	75	4-4	65

BYU	1934	Opp.	BYU	1935	Opp.
32	Occidental	7	0	Montana State	7
20	Montana State	6	19	Greeley State	3
0	Wyoming	7	12	Colorado College	13
0	Utah	43	13	Wyoming	6
6	Colorado	48	0	Utah	32
46	Western State	0	21	Western State	2
0	Utah State	15	0	Utah State	27
34	Colorado College	19	13	Ariz. State Teach.	0
6	Denver	24			
144	4-5	169	78	4-4	90
BYU	1936	Opp.	BYU	1937	Opp.
6	Arizona U.	32	7	Greeley State	0
19	Montana State	0	0	Utah	14
33	Greeley State	0	34	California Aggies	0
0	Utah State	13	0	Colorado	14
0	Utah	18	10	Portland	13
26	Western State	12	21	Western State	0
7	Denver	35	19	Wyoming	0
32	Wyoming	7	54	Utah State	0
0	Colorado College	6	19	Montana State	0
123	4-5	123	164	6-3	41
BYU	1938	Opp.	BYU	1939	Opp.
19	Arizona State	0	25	Arizona State	0
20	Denver	0	13	Colorado State	12
24	Wyoming	13	13	Utah	35
7	Utah	7	7	Nevada	0
3	Portland	6	18	Greeley State	6
0	Utah State	3	21	Denver	18
0	Colorado	8	0	Utah State	0
20	Colorado State	12	6	Colorado	12
			7	Wyoming	7
93	4-3-1	49	110	5-2-2	90
BYU	1940	Opp.	BYU	1941	Opp.
6	Nevada	6	7	Montana State	20
6	Utah	12	13	Denver	7
20	Wyoming	0	6	Utah	6
20	Texas Tech	21	13	U. San Francisco	25
12	Utah State	7	28	Utah State	0
0	Denver	9	23	Wyoming	7
2	Colorado	25	13	Colorado	13
13	Colorado State	13	7	Colorado State	22
			26	Greeley State	0
79	2-4-2	93	136	4-3-2	100
BYU	1942	Opp.	BYU	1946	Opp.
12	Montana State	6	13	Western State	2
6	Wyoming	13	12	Montana State	13
12	Utah	7	13	Denver	26
6	Utah State	9	6	Utah	35
6	Denver	26	10	Colorado	7
0	Colorado U.	48	0	San Jose State	14
13	Fort Douglas	24	6	Wyoming	3
			0	Utah State	0
55	2-5	133	20	Colorado A&M	6
			14	Texas Mines	13
			94	5-4-1	119

NOTE:
No BYU football teams
during war years,
1943-1945

PAST SEASONS

BYU	1947	Opp.	BYU	1948	Opp.
45	Western State	0	14	San Diego State	6
19	Montana State	14	13	Pepperdine	0
7	Wyoming	12	7	Pacific Destroyers	9
6	Utah	28	0	Utah	30
7	Colorado	9	20	Texas Mines	34
27	Utah State	12	7	Utah State	20
6	Denver	20	26	Montana U.	20
19	San Jose State	28	6	San Jose State	21
25	Colorado A&M	27	0	Colorado A&M	20
7	San Diego State	32	15	Wyoming	14
			27	Arizona State	25

168 3-7 182 135 5-6 199

BYU	1949	Opp.	BYU	1950	Opp.
6	Texas Western	47	14	Idaho State	13
13	Pac. Destroyers	27	13	Arizona State	41
21	San Jose State	40	28	Pepperdine	27
0	Utah	38	28	Utah	28
21	Arizona State	49	14	Colorado A&M	27
7	Denver	35	3	Denver	42
0	Wyoming	45	34	Utah State	13
3	Utah State	22	0	Wyoming	48
14	Colorado A&M	16	7	Hawaii	39
6	Montana U.	25	28	Fort Hood	14
14	Pepperdine	28			

105 0-11 362 169 4-5-1 292

BYU	1951	Opp.	BYU	1952	Opp.
27	Idaho State	7	14	San Diego AS	7
67	Western State	7	14	New Mexico	10
20	Hawaii	7	28	Montana	7
6	Utah	7	6	Utah	34
20	Wyoming	20	14	Denver	13
6	Denver	56	13	Wyoming	24
21	Colorado A&M	19	27	San Jose State	44
28	Utah State	27	26	Utah State	27
0	New Mexico	34	6	Colorado A&M	27
20	Pepperdine	0	6	Ariz. St. (Tempe)	47

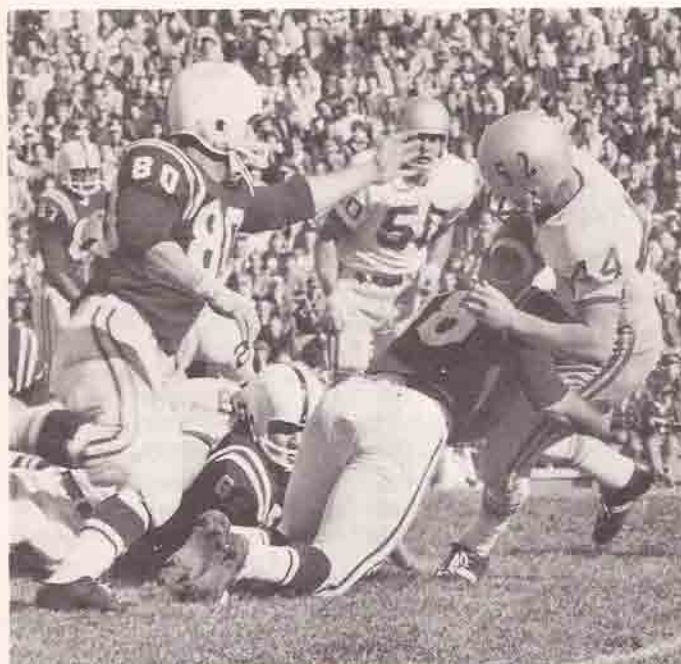
215 6-3-1 184 154 4-6 240

BYU	1953	Opp.	BYU	1954	Opp.
27	Montana	12	12	New Mexico	21
25	San Jose State	28	19	Arizona State	28
12	New Mexico	12	13	Colorado A&M	14
20	Idaho	14	7	Utah	12
7	Utah State	14	19	Montana	7
19	Denver	27	13	Utah State	45
0	Wyoming	27	0	Denver	20
12	Colorado A&M	34	13	Wyoming	34
18	Arizona State	26	0	Idaho	7
32	Utah	33			

172 2-7-1 227 96 1-8 188

BYU	1955	Opp.	BYU	1956	Opp.
0	Oregon State	33	0	Wichita Univ.	13
33	Los Angeles State	0	13	Fresno State	26
13	Montana	27	0	Colorado A&M	0
9	Utah	41	6	Utah	41
0	Denver	33	14	Montana Univ.	21
6	Wyoming	14	7	Utah State	33
21	Utah State	47	33	New Mexico	12
6	Idaho	49	34	Denver	58
0	Colorado A&M	35	6	Wyoming Univ.	7
16	New Mexico	21	34	Air Force Acad.	21

104 1-9 300 147 2-7-1 232



Bruce Samples, junior wingback from Ogden, led the nation in kickoff returns with a total of 603 yards, a 25.1 average.

BYU	1957	OPP	BYU	1958	OPP
14	Arizona	14	29	Fresno State	7
7	Kansas State	36	14	Utah	7
20	Montana	7	6	Colorado State	32
0	Utah	27	8	College of Pacific	28
0	Wyoming	0	6	No. Texas State	12
25	Denver	6	41	Montana	12
14	Utah State	0	13	Utah State	6
14	Fresno State	27	36	New Mexico	19
26	Colorado State	9	22	Denver	7
14	New Mexico	12	14	Wyoming	22
	5-3-2			6-4	

BYU	1959	Opp.	34	1960	14
18	Arizona	14	8	Cal Poly	21
16	Fresno State	27	7	San Jose State	8
0	Montana	12	0	Colorado State	17
8	Utah	20	0	Utah	31
6	Wyoming	21	7	Arizona State	6
18	Utah State	0	0	Montana	34
7	Denver	14	15	Utah State	27
6	New Mexico	21	19	New Mexico	6
8	Arizona State	21	6	Denver	30
14	Colorado State	13	6	Wyoming	13
	3-7			Hawaii	
				3-8	

YEAR BY YEAR

Year	BYU Opp.					MSAC	
	W.	L.	T.	Pts.	Pts.	Head Coach	Finish
1922	1	5	0	10	185	A. G. Twitchell	—
1923	2	5	0	47	156	A. G. Twitchell	—
1924	2	3	1	44	61	A. G. Twitchell	—
1925	3	3	0	69	81	C. J. Hart	—
1926	1	5	1	49	115	C. J. Hart	—
1927	2	4	1	105	118	Ott Romney	—
1928	2	3	2	74	56	Ott Romney	—
1929	5	3	0	140	115	Ott Romney	—
1930	4	1	3	135	86	Ott Romney	—
1931	4	4	0	69	104	Ott Romney	—
1932	7	1	0	175	43	Ott Romney	—
1933	4	4	0	75	65	Ott Romney	—
1934	4	5	0	144	169	Ott Romney	—
1935	4	4	0	78	90	Ott Romney	—
1936	4	5	0	123	123	Ott Romney	—
1937	6	3	0	164	41	Eddie Kimball	—
1938	4	3	1	93	49	Eddie Kimball	2nd-Tie
1939	5	2	2	110	90	Eddie Kimball	4th
1940	2	4	2	79	93	Eddie Kimball	4th
1941	4	3	2	136	100	Eddie Kimball	2nd-Tie
1942	2	5	0	55	133	Floyd Millett	7th
1946	5	4	1	94	119	Eddie Kimball	4th
1947	3	7	0	168	182	Eddie Kimball	7th
1948	5	6	0	135	199	Eddie Kimball	5th
1949	0	11	0	105	362	Chick Atkinson	6th
1950	4	5	1	169	292	Chick Atkinson	5th
1951	6	3	1	215	184	Chick Atkinson	5th
1952	4	6	0	154	240	Chick Atkinson	5th
1953	2	7	1	172	277	Chick Atkinson	7th-Tie
1954	1	8	0	96	188	Chick Atkinson	8th
1955	1	9	0	104	300	Chick Atkinson	8th
1956	2	7	1	147	232	Harold Kopp	7th
1957	5	3	2	134	138	Harold Kopp	2nd
1958	6	4	0	189	152	Harold Kopp	3rd
1959	3	7	0	101	167	Tally Stevens	5th-Tie
1960	3	8	0	102	207	Tally Stevens	5th-Tie

NEWS OUTLETS

SALT LAKE CITY

Hack Miller, Dee Chapman, and George Ferguson, Deseret News-Telegram (P.M.), 33 Richards St.
 John Mooney, Jack Schroeder, Bill Coltrin, Salt Lake Tribune (A.M.), 143 South Main.
 Dean Bennett, Sportscaster, Station KSL, Union Pacific Building
 Sports Radio Station KALL, 146 South Main
 Sports Editor, Radio Station KUTA, 179 Social Hall Ave.
 Steve Smilanich, Sports Writer, United Press-International, Tribune Building
 Sports Editor, Associated Press, Tribune Building
 Sports Editor, Station KDYL, 143 South Main
 Paul James, Station KCPX, Social Hall Ave.
 Don Spainhower, KSL-TV, Social Hall Ave.
 Paul Doubray, Station KUTV, Social Hall Ave.

PROVO

Ray Schwartz, Sports Editor, Provo Daily Herald (P.M.) 190 West 4th No.
 Linn Rockwood, Station KOVO
 Dave Weiser, Sports Editor, Station KEYY, 172 West Center
 Sports Editor, Station KBYU, BYU Campus
 Sports Editor, Station KIXX, Provo 1200 South University
 Sports Editor, Universe, Student Newspaper, BYU Campus

OTHER AREAS

Al Warden, Sports Editor, Ogden Standard-Examiner, Ogden Utah
 Sports Editor, Logan Herald Journal, Logan, Utah
 Sports Editor, Station KSUB, Cedar City, Utah
 John Henry, Station KOA, Denver
 Cher Nelson, Sports Editor, Rocky Mountain News, Denver, Colorado
 George Franco, Denver Post, Denver, Colorado
 Frank Pitman, Associated Press, Denver, Colorado
 Gene Meakins, United Press-International, Denver
 Larry Birleffi, KFBC, Cheyenne

BYU ATHLETE'S CREED

I am a Brigham Young University athlete—

... I know that my body is created in the image of God. It is His gift, and the temple of my spirit.

... Therefore, I will keep my mind and body strong and clean. I will never defile them with strong drink, noxious drugs, stimulants, or overindulgence of any kind.

... Since it is my duty and privilege to keep in the best possible physical condition, I will observe all the rules of good health and never flinch from the rigors of training.

... Although I am an athlete, I am first and foremost a student.

... Because I am blessed with skill and strength, I will devote my talents to the glory of Brigham Young University, and as long as I am a member of its studentbody observe the ideals of the amateur.

... Although adverse forces may be ranged against me, I will always do my best to win. But winning will be incidental to playing the game well, for I will never let the desire to win deceive me into any dishonest, unsportsmanlike, or ungentlemanly act.

... If I win, I shall be grateful. If I lose, it will be only because my opponent is better than I, and I shall be the first to shake his hand.

... When I compete as an individual, I will do my best to remember that the glory of B.Y.U. rests upon my shoulders alone. I will bend every effort of brain, muscle and sinew for that glory.

... When I compete in team sports, I will do my best to perform my part well and earn the confidence of my teammates. When I have the choice, I will let my companion make the score.

... I am honored because thousands of men, women, and children follow the athletic fortunes of my school and watch me perform. Therefore, I will always give them my best efforts and never do anything which will disappoint them.

... I know that my reputation as an athlete goes with me beyond the playing field, and, consequently, I will try to make it synonymous with the role of a gentleman, both at home and away, reflecting the standards of B.Y.U. in dress and conduct.

BASKETBALL SCHEDULE

Dec. 1 (Fri.)	UCLA at Provo
Dec. 2 (Sat.)	UCLA at Provo
Dec. 8 (Fri.)	Santa Clara at San Jose, Calif.
Dec. 9 (Sat.)	Santa Clara at San Jose, Calif.
Dec. 15 (Fri.)	Oklahoma State at Stillwater, Okla.
Dec. 16 (Sat.)	Oklahoma at Norman, Okla.
Dec. 18 (Mon.)	Air Force Academy at Provo
Dec. 20 (Wed.)	San Jose State at Provo
Dec. 22 (Fri.)	University of Pacific at Provo
Dec. 27 (Wed.)	New Mexico State at Las Cruces
Dec. 29 (Fri.)	Arizona at Tucson, Ariz.
Dec. 30 (Sat.)	Arizona State at Tempe, Ariz.

CONFERENCE

Jan. 6 (Sat.)	Montana at Missoula, Mont.
Jan. 12 (Fri.)	Wyoming at Provo
Jan. 13 (Sat.)	Colorado State at Provo
Jan. 20 (Sat.)	Utah at Salt Lake City
Jan. 26 (Fri.)	Utah State at Logan
Feb. 2 (Fri.)	Denver at Provo
Feb. 3 (Sat.)	New Mexico at Provo
Feb. 10 (Sat.)	Utah State at Provo
Feb. 16 (Fri.)	Colorado State at Ft. Collins
Feb. 17 (Sat.)	Wyoming at Laramie
Feb. 22 (Thurs.)	Montana at Provo
Feb. 24 (Sat.)	Utah at Provo
March 1 (Thurs.)	New Mexico at Albuquerque
March 3 (Sat.)	Denver at Denver

FRESHMAN BASKETBALL SCHEDULE

Nov. 24 (Fri.)	BYU Varsity at Provo
Jan. 6 (Sat.)	Mesa College at Provo
Jan. 12 (Fri.)	Snow Junior College at Provo
Jan. 13 (Sat.)	Idaho State College Frosh at Provo
Jan. 15 (Mon.)	Weber Junior College at Ogden
Jan. 20 (Sat.)	University of Utah Frosh at Salt Lake
Jan. 26 (Fri.)	Utah State Univ. Frosh at Logan
Feb. 2 (Fri.)	Hill Air Force Base at Provo
Feb. 3 (Sat.)	College of Southern Utah at Provo
Feb. 10 (Sat.)	Utah State Univ. Frosh at Provo
Feb. 17 (Sat.)	Snow Junior College at Ephraim
Feb. 22 (Thurs.)	Carbon College at Provo
Feb. 24 (Sat.)	University of Utah Frosh at Provo
Mar. 1 (Thurs.)	Weber Junior College at Provo
Mar. 3 (Sat.)	Idaho St. College Frosh at Pocatello